



Mine Safety and Health Conference

Reno, Nevada

October 23, 2018

David G. Zatezalo

Assistant Secretary of Labor

Mine Safety and Health Administration



The MSHA Mission

“to prevent death, illness, and injury from mining and promote safe and healthful workplaces for U.S. miners”

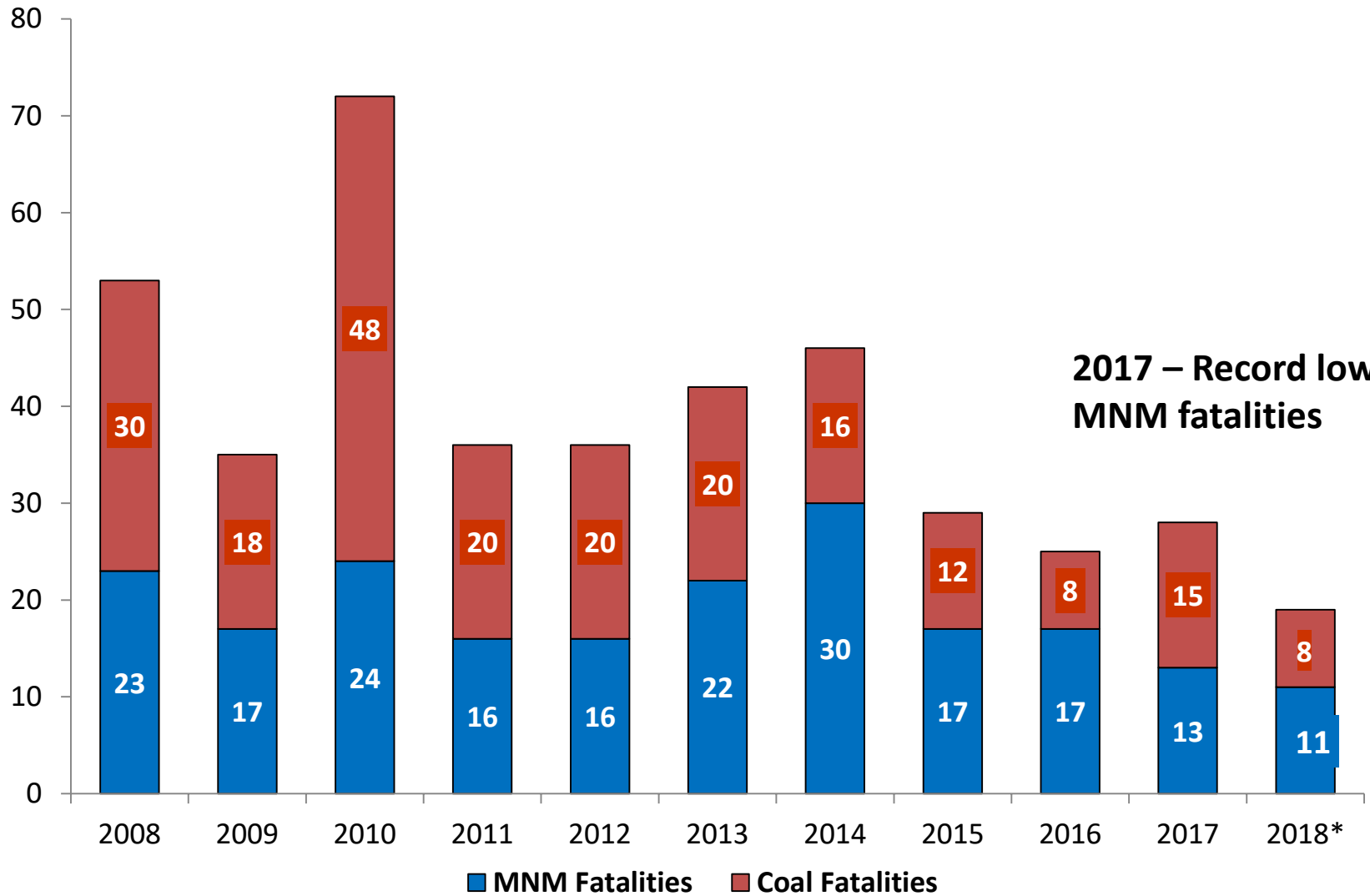


MSHA's Tools

- Fair and consistent enforcement, including mandated inspections
- Compliance and technical assistance
- Training and education
- Rulemaking and policy guidance



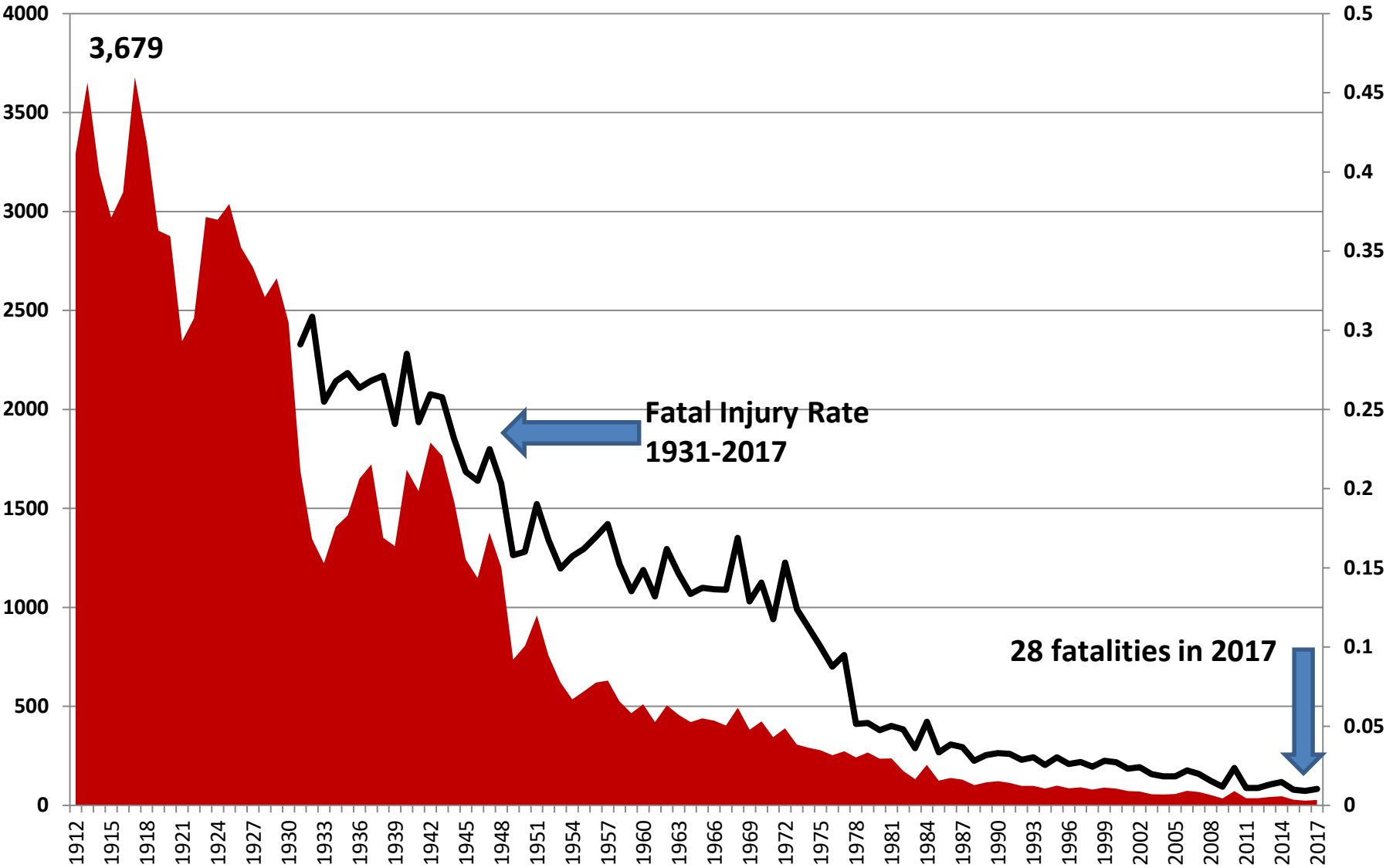
U.S. MINING FATALITIES COAL and METAL/NONMETAL 2008-2018*



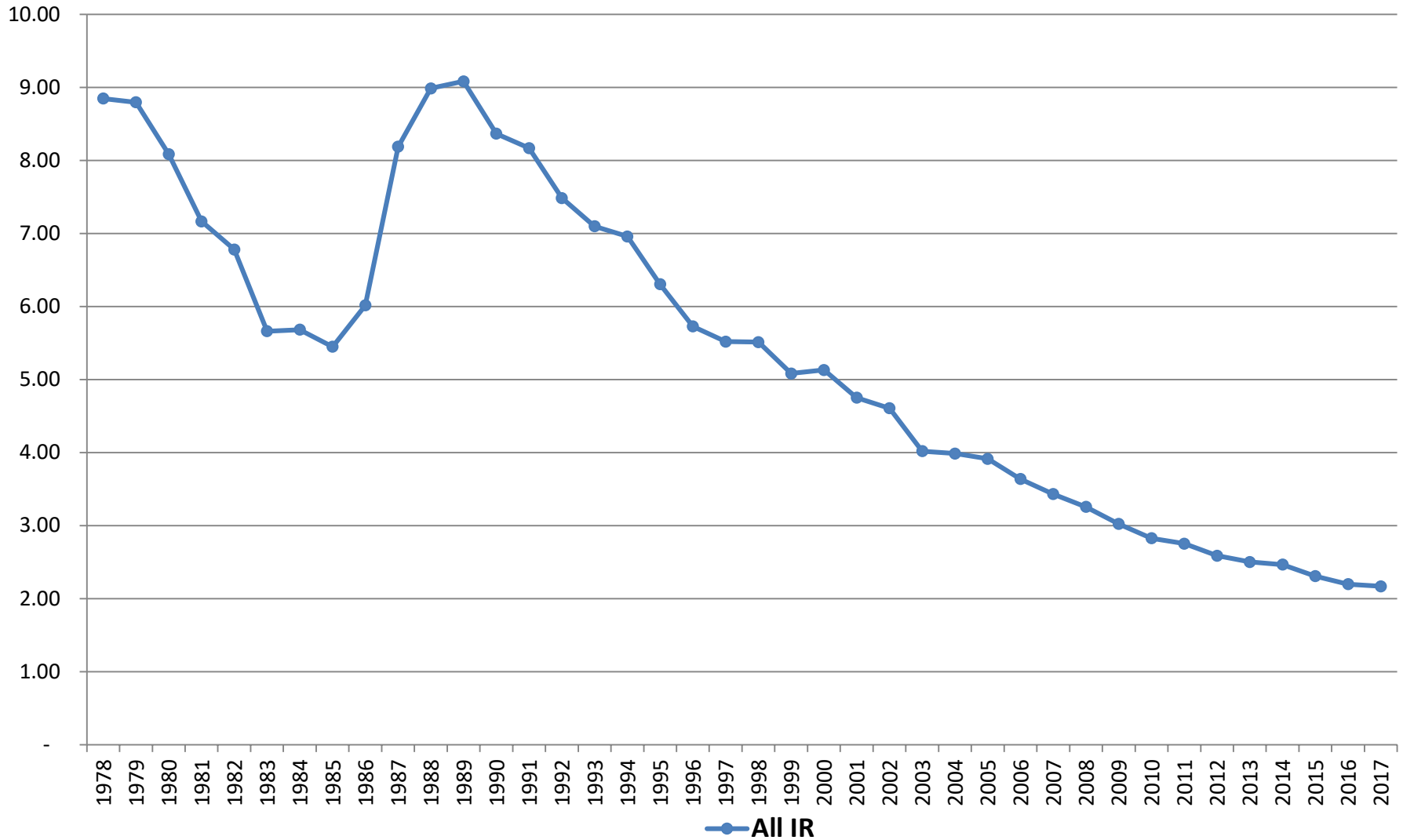
*Data as of Oct. 12, 2018.



All Mining Fatalities 1912-2017



Mining Reportable Injury Rates 1978-2017



Mines and Employment: Coal, M/NM

Total # of Mines	13,102	12,257*
-Coal Mines Only	1,216	1,099*
-Metal/Nonmetal Mines Only	11,886	11,158*
Total Mine Employment	312,372	321,414*
-Coal Mines Only	82,920	79,769*
-Metal/Nonmetal Mines Only	238,452	241,645*

* Q1-Q2 only, employment data for Q3 not available until late October

Cross training inspectors and updating systems to blur the distinction between Coal and Metal/Nonmetal Enforcement where it makes sense; expertise still required for certain mines

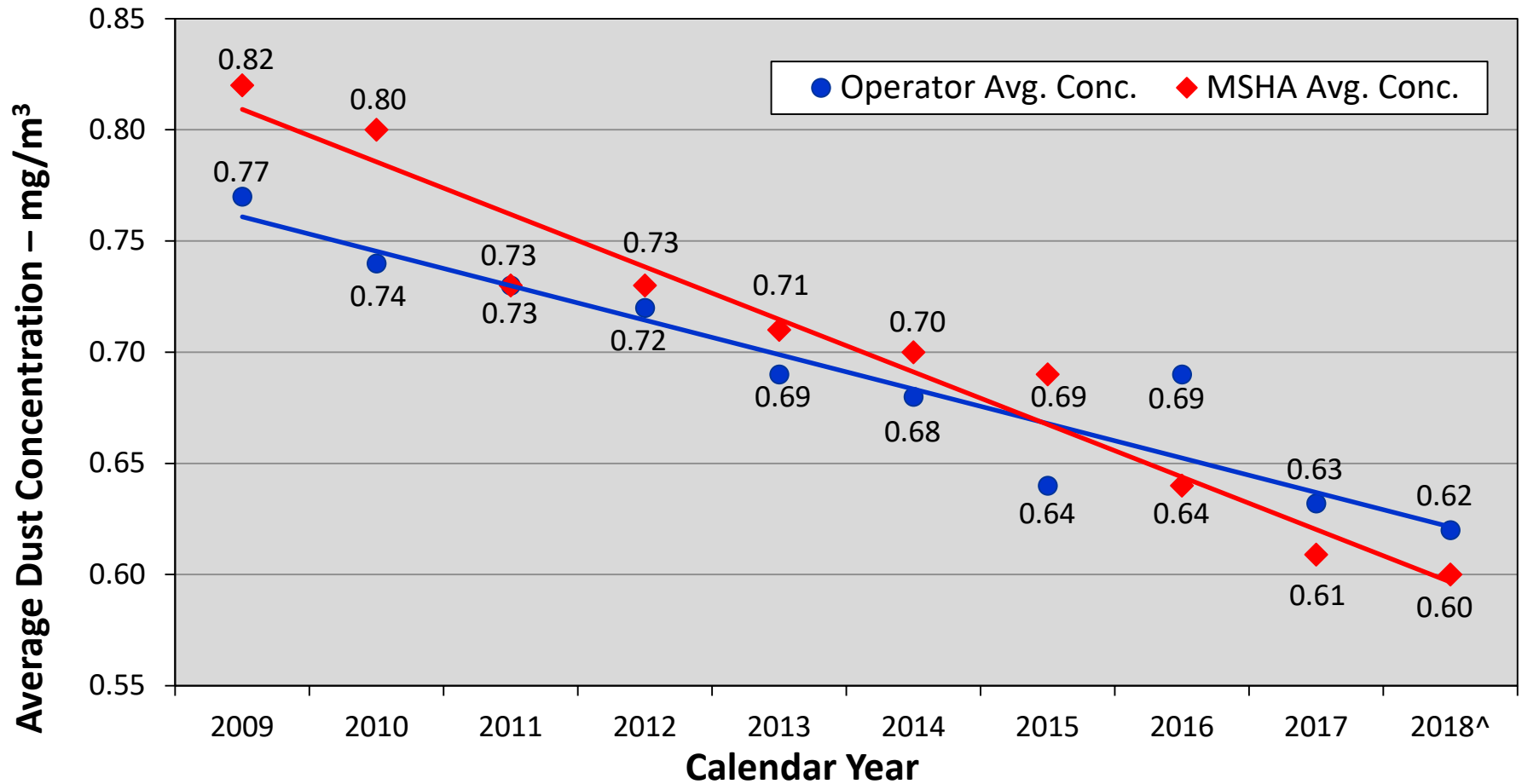


Policy Updates

- Refuge chambers
- Diesel particulate matter
- Dust and silica standards



Average Dust Concentration in Underground Coal Mines, by MSHA and Operator Samples

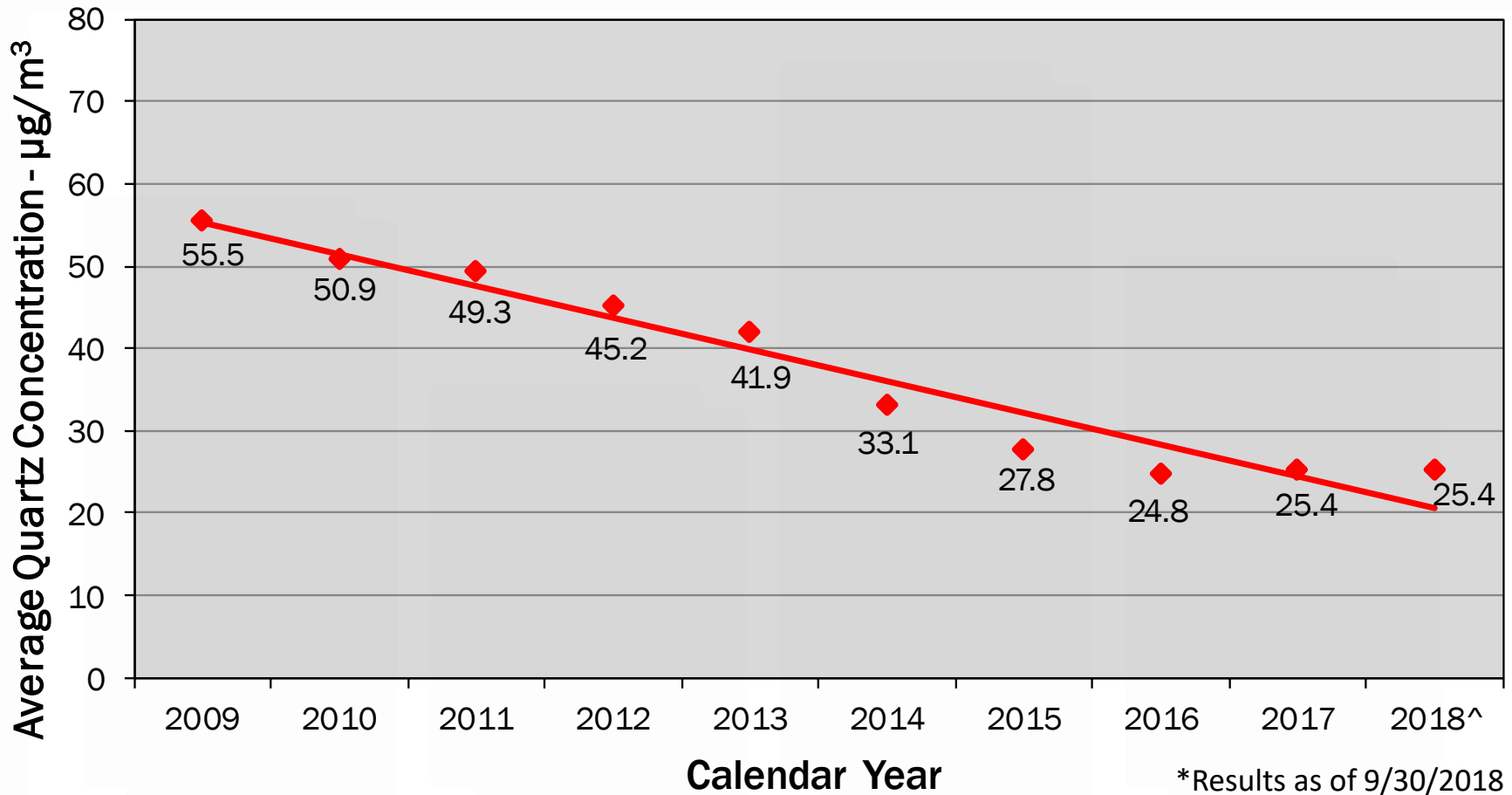


*As of 9/3/2018



Underground Coal Mines

MSHA Average Designated Occupation* Quartz Concentration by Calendar Year



Fire Suppression Failures

- Four mobile equipment fires in past month (two rock trucks, one hydraulic shovel, one excavator)
- Fire suppression systems failed in all
- One miner killed, another injured
- Fire suppression equipment must be properly installed
- Miners should have a means to escape



Powered Haulage Safety

Powered Haulage accidents are low-frequency, high-consequence events

- 50% of fatalities in 2017
- More than 50% of fatalities (9 of 17) so far in 2018

Preventing these accidents is a priority for MSHA! Focus on mobile equipment, seatbelts and conveyor systems



Mobile Equipment

Large vehicles striking other vehicles or pedestrians have killed 4 miners since January 2017; at least 24 since 2003





Seatbelt Usage

- Three fatalities in 2017, 35 since 2007, involved miners not wearing seat belts
- 6000+ MSHA citations issued for failure to wear seatbelts since 2007; enforcement alone appears to be insufficient



Loader operator saved by wearing seat belt

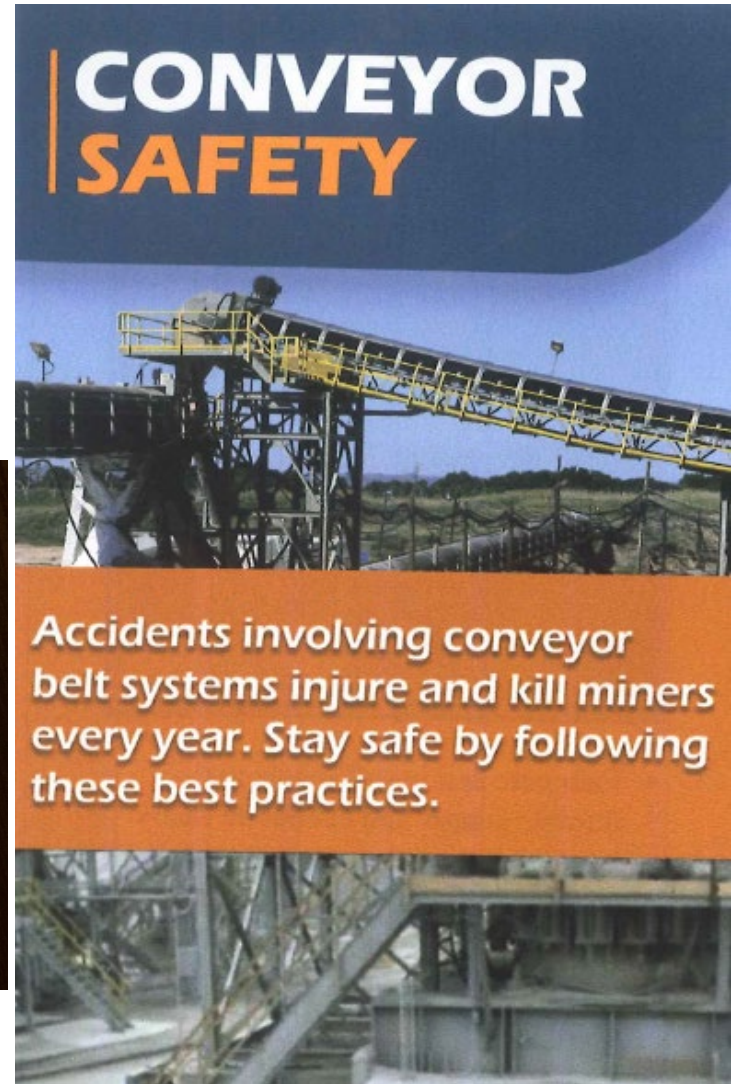
Belt Conveyors

- Seven miners killed working around belt conveyors since January 2017: four in coal, three in MNM
- Total of 19 conveyor-related fatalities and 41 conveyor-related permanent injuries since 2008
- Guarding, lock-out tag-out, properly using crossovers, all essential for safety



Powered Haulage Safety Outreach

MSHA is distributing stickers, brochures and more to spread the word



Powered Haulage Safety Ideas

- Seeking your ideas to prevent these accidents from occurring
- Formal Request for Information open for comments until December 24, 2018, see www.msha.gov/powerdhaulage
- A powered haulage safety plan?



Scofflaw Initiative

- Small share of operators are chronically delinquent and have poor safety records
- Monthly batches of letters to worst violators
- Payment plans proposed/established with total commitment of \$4.1 million
- 11 mines paid in full for \$1.1 million
- 33 104(a) citations issued; 12 104(b) orders issued; all but two operations now open





Questions?

*"Daddy
© Way*



MSHA.GOV | @USDOL #MSHA