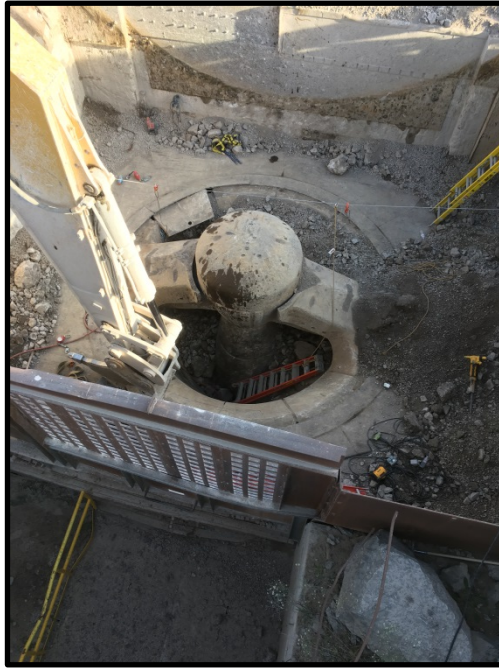


METAL/NONMETAL Serious Accident Alert

Surface - Limestone – On October 22, 2017, a miner was working on clearing a jammed primary crusher. While using an air hammer to break up a large rock, another rock became dislodged and slid down, pinning the miner's feet. After being pinned for nearly an hour, the victim was freed and taken to a nearby hospital for observation.



Best Practices

- Establish policies and follow manufacturer's recommended procedures for conducting specific tasks on crushers. Implement measures to ensure miners are positioned safely and protected from hazards while performing the task.
- Task train persons to recognize all potential hazardous conditions and to understand safe job procedures for elimination of the hazards before beginning work.
- Do not work below unsecured material.
- Remove excess material by mechanical means where possible before the cause of the blockage can be dealt.
- When removal of material by hand is necessary, the crusher and associated plant must be stopped and isolated
- Manual removal should only be carried out by suitably trained and competent persons



www.msha.gov

askmsha@dol.gov

Twitter: @MSHA_DOL

Report Accidents &
Hazardous Conditions
1-800-746-1553