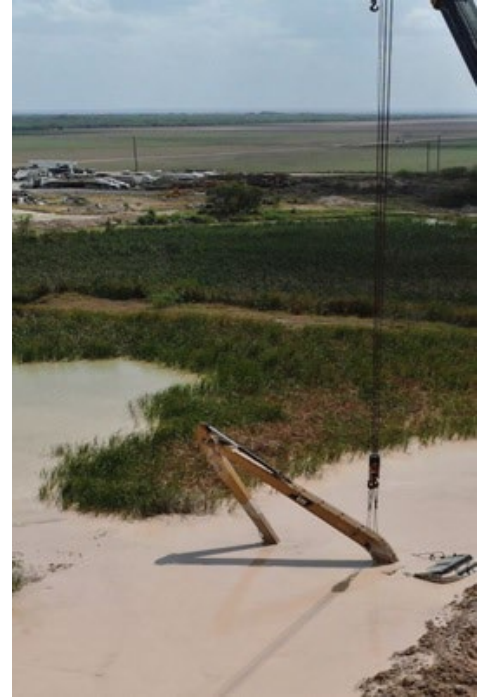


Water-Related Fatalities on the Rise



(Upper Left) Floating pump station that a miner was working on capsized.
(Upper Right) Dredge operator drowned.

Long Reach Excavator in water.

5 water-related fatalities since 2022

Hazards of Working Around, Over, or Near Water

HAZARDS - undercut banks, sloughing ground, varied water depth, swift currents, inadequate berms, narrow roadways

POTENTIAL DANGER - Entrapment, Entanglement, Drowning, Electrocutation

RISKS – Traveling, operating mining equipment, around, over, or near water

Best Practices

- Conduct daily workplace examinations.
- Know the water depth and subsurface conditions and ground conditions before you begin work.
- Keep equipment a safe distance back from the water's edge.
- Provide handrails around docks and work boats.
- Properly berm roadways near water hazards.
- Provide and ensure workers wear a Coast Guard approved Type I or Type V personal flotation device (PFD) when working around water.
- Keep water rescue equipment easily accessible.
- Practice good housekeeping and keep all travel ways clear around water hazards.
- Post warning signs near water hazards.



PFD

Report accidents and hazardous conditions: 1-800-746-1553

[msha.gov](https://www.msha.gov) | askmsa@dol.gov | [@MSHA_DOL](https://twitter.com/MSHA_DOL)