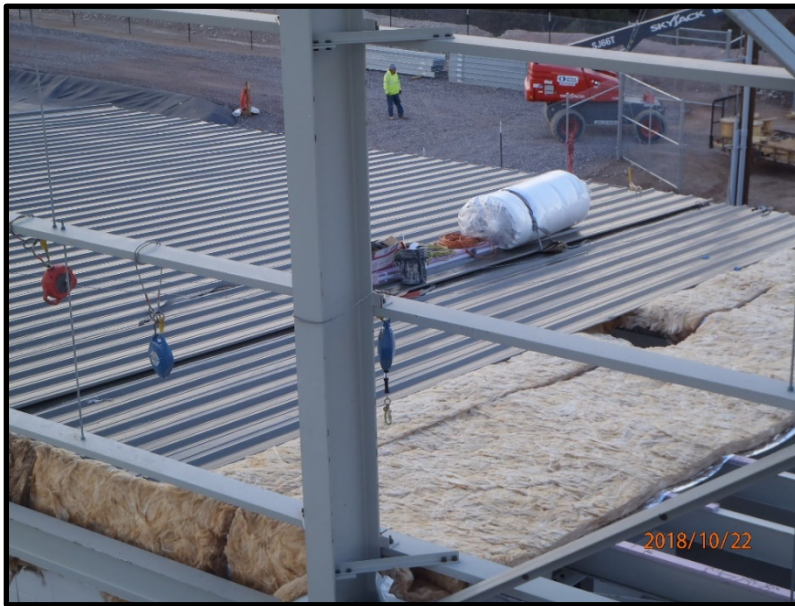


## MSHA Serious Accident Alert

**Surface - Gold** – On 10/22/2018, a contract employee fell 20 feet during the installation of a building roof at the mine. The employee landed on a concrete floor and was seriously injured. Investigators found the cable in the self-retracting device (SRD) the employee was using had broken near the load-end clip. The investigation determined that the SRD was used incorrectly. The device is designed to be used overhead with 0 degrees of swing fall, as stated on the label. However, at the time of the accident, the SRD was anchored so that there was 90 degrees of swing fall.



### BEST PRACTICES

- Use fall protection devices in accordance with the manufacturer's recommendations.
- Ensure that a safe means of access to a working place is provided. Train miners on how to safely access all work areas.
- Inspect fall protection devices according to the manufacturer's recommendations prior to each use, and replace when defects or wear is evident.
- Protect openings near travel ways and work areas through which persons may fall by installing appropriately designed railings, barriers, or covers.
- Always use the right tools for the task being performed.



[www.msha.gov](http://www.msha.gov)  
[askmsa@dol.gov](mailto:askmsa@dol.gov)  
Twitter: @MSHA\_DOL

Report Accidents &  
Hazardous Conditions  
1-800-746-1553