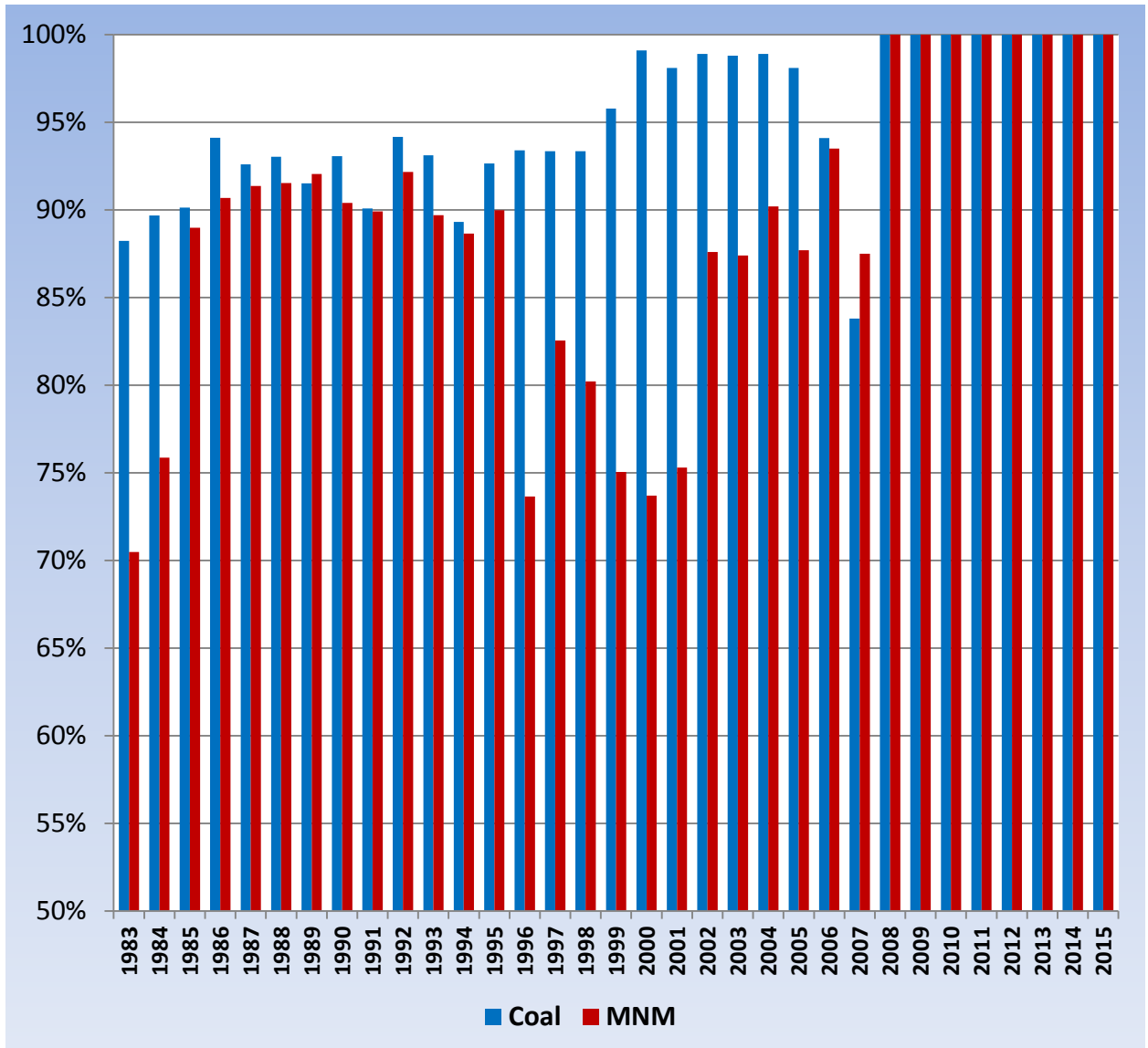


Percent of Mandated Inspections Completed CY 1983-2015

Legislation requires two annual inspections of every surface mine and four at every underground mine. Since 2008, 100% of the mandated inspections were completed by both Coal and Metal and Nonmetal.



NOTES:

1. For MNM rates pertaining to years 2008 through 2015, there were a small number of attempted mandatory inspections that inspectors could not conduct because of the nature of intermittent MNM mining operations. Excluding these attempted inspections of intermittent operations, MNM conducted 100% of mandatory inspections at mines available for inspection for years 2008 through 2015.
2. Information for years 1983 through 1999, is estimated using MSIS data for mandatory inspections conducted in non-intermittent mining operations.
3. Inspection data prior to 1983 is not available in MSIS.

For more info: <http://arlweb.msha.gov/MSHAINFO/MSHAINF2.htm>