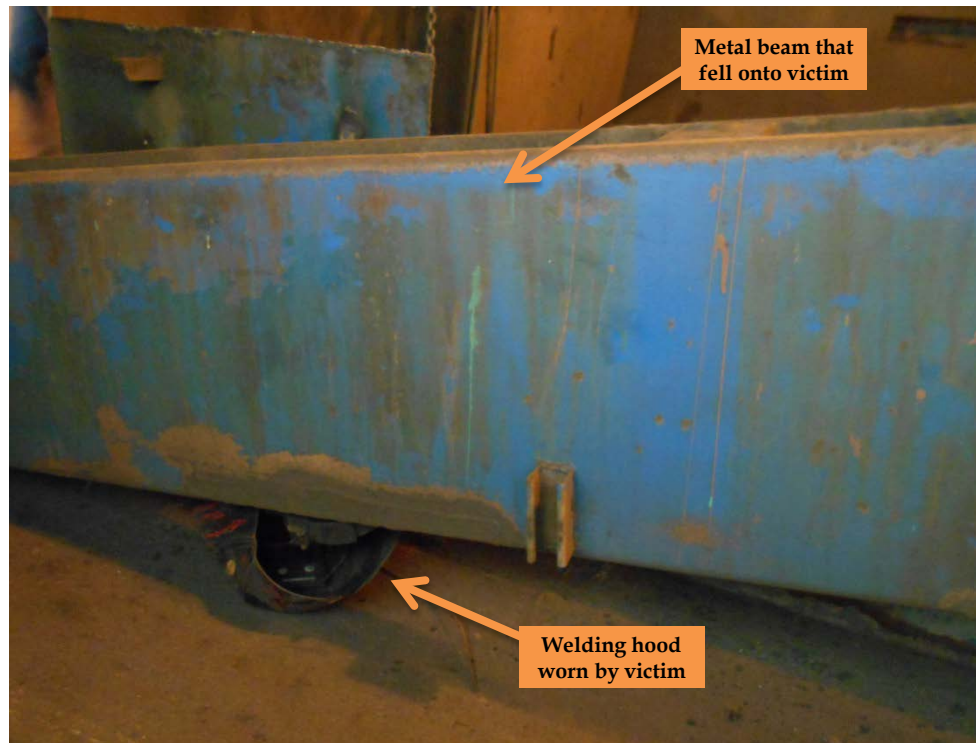


COAL MINE FATALITY- On August 3, 2017, a 32-year-old miner with 6 years of mining experience was fatally crushed while he was cutting one end of a metal beam. He was dismantling a metal structure at a preparation plant when the beam fell on him.



BEST PRACTICES

- Securely block equipment and components against hazardous motion at all times while performing work.
- Ensure that blocking material is competent, substantial, and adequate to support the load.
- Require all persons to be positioned where they will not be exposed to hazards. Do not work in pinch points where inadvertent movement could cause injury.
- Before beginning work, analyze all tasks, establish safe work procedures, train miners, and eliminate hazards. Be alert for hazards that may be created while the work is being performed.
- Monitor all persons to ensure safe work procedures, including safe work positioning, are followed.
- When possible, do not allow miners to work alone. If a miner works alone, establish a routine of checking on them.

This is the eleventh fatality reported in 2017 in the coal mining industry and it is classified as Falling Material. As of this date in 2016, seven fatalities were reported, with none in this classification.