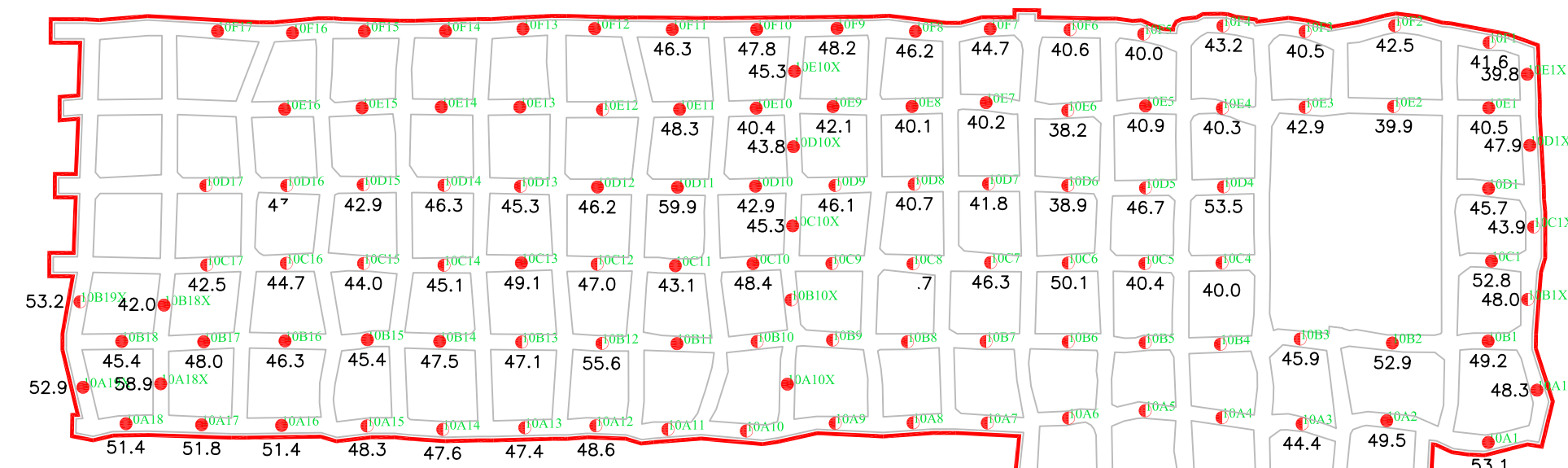
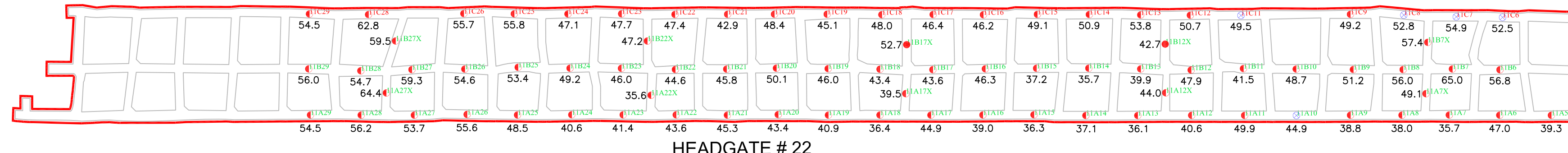
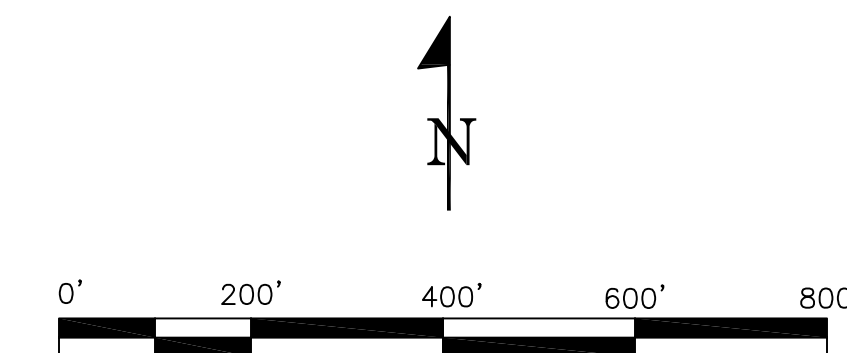


WEST JARRELLS MAINS



NORTH JARRELLS MAINS



HEADGATE #22

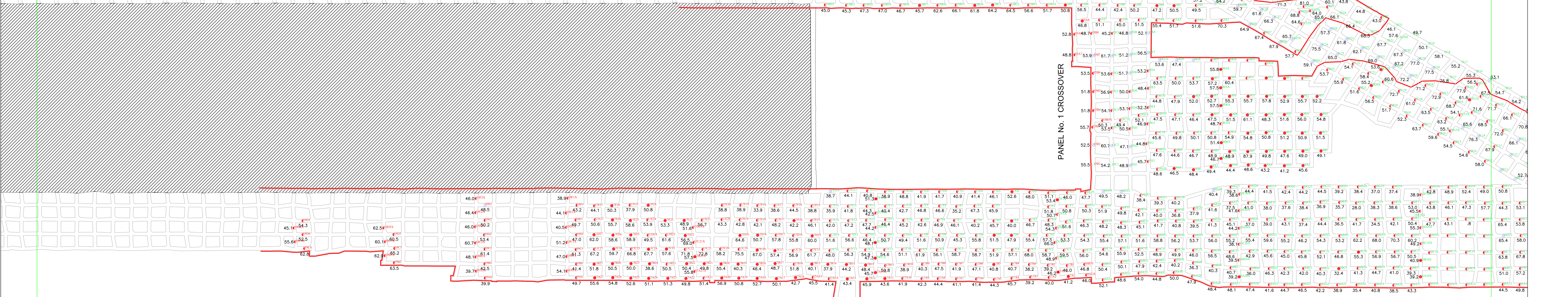
PANEL No. 2 CROSSOVER

TAILGATE #22

HEADGATE 1 NORTH

NORTH GLORY MAINS

MATCH TO MAP #2



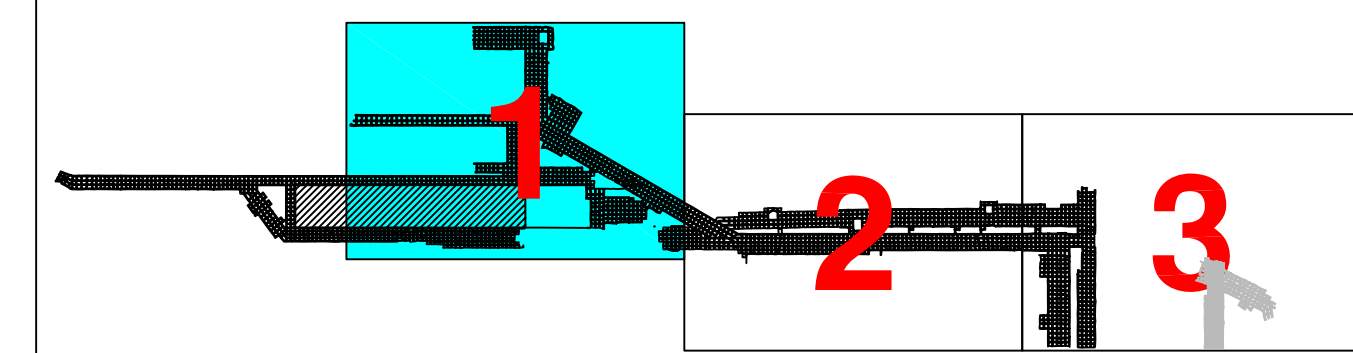
- EXTENT OF FLAME
- 53.6 INCOMBUSTIBLE CONTENT (PERCENT)
- 17E14 SAMPLE NUMBER (INTAKE AIR COURSE)
- 13F18 SAMPLE NUMBER (RETURN AIR COURSE)

- NONE
- TRACE
- SMALL
- LARGE
- EXTRA LARGE

LEGEND  
Scale 1"=200'

MAPPING NOTES

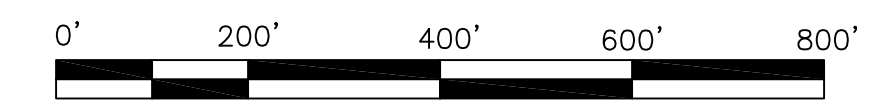
LOCATION OF COLLECTED MINE DUST SURVEY SAMPLES, AND RESULTS OF COKING AND INCOMBUSTIBLE CONTENT ANALYSIS.



APPENDIX Z-1  
Mine Map Showing Extent of Flame, Incombustible Content, and Coke  
Upper Big Branch Mine – South  
Performance Coal Company  
MSHA ID No. 46-08436

MATCH TO MAP #1

MATCH TO MAP #3



PARALLEL OLD NORTH MAINS

OLD NORTH MAINS

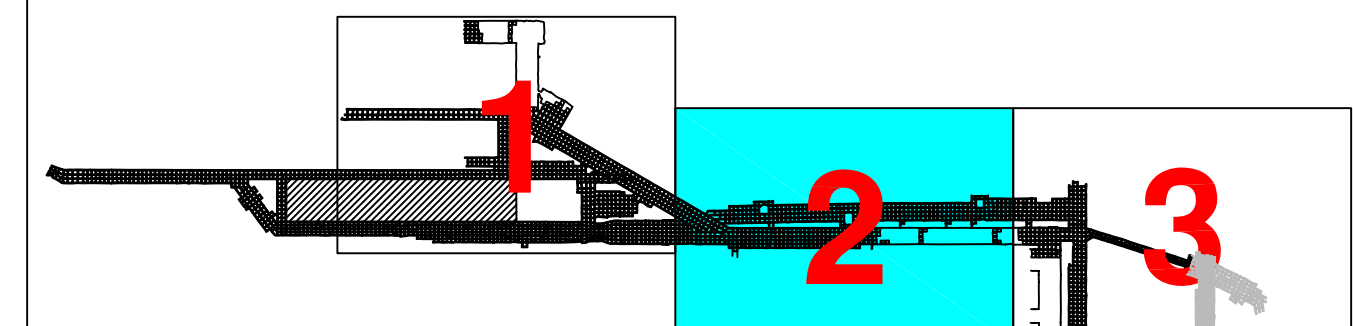


- EXTENT OF FLAME
- 53.6 INCOMBUSTIBLE CONTENT (PERCENT)
- 17E14 SAMPLE NUMBER (INTAKE AIR COURSE)
- 13F18 SAMPLE NUMBER (RETURN AIR COURSE)

- AMOUNT OF COKING
- NONE
  - TRACE
  - SMALL
  - LARGE
  - EXTRA LARGE

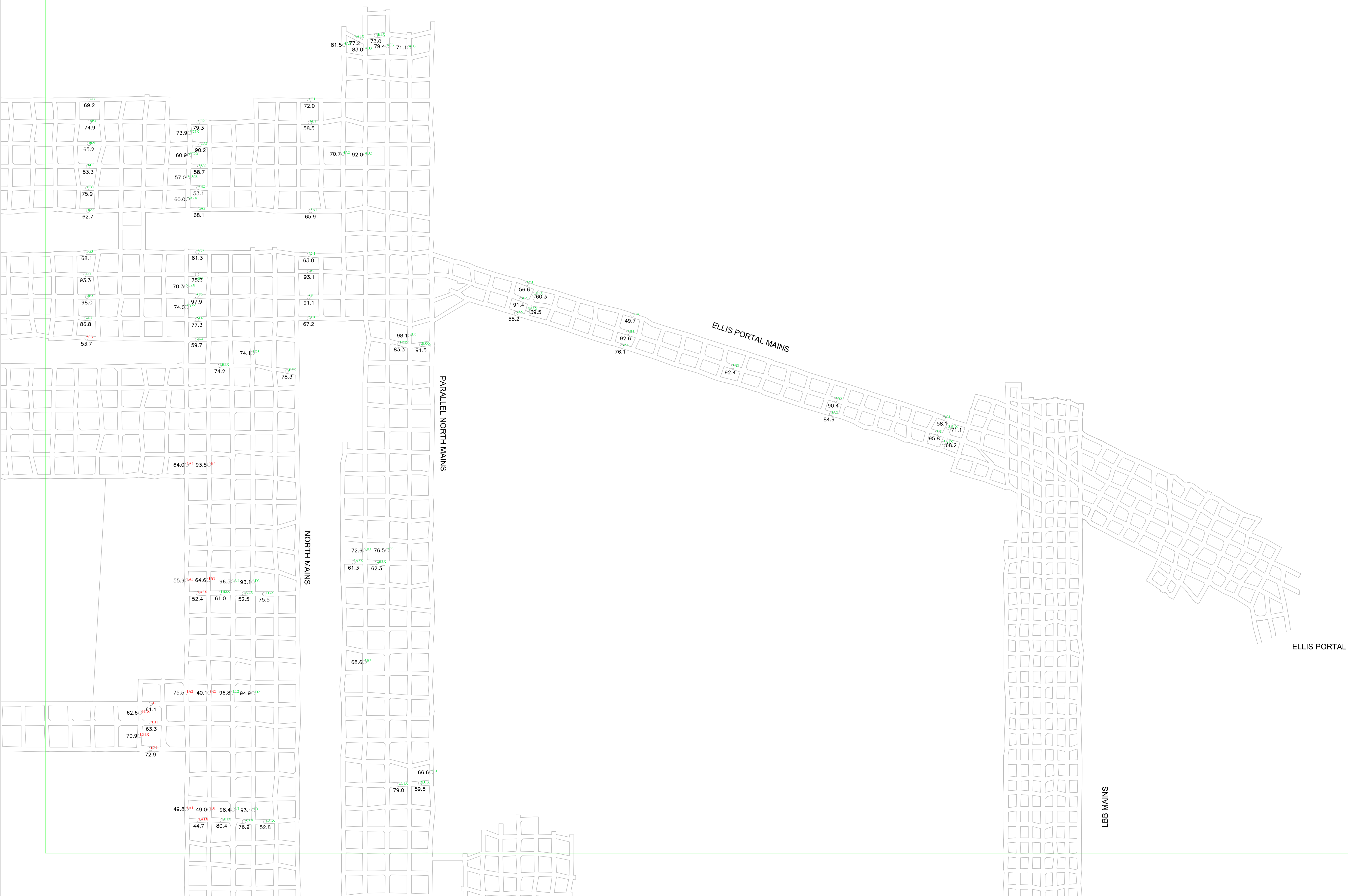
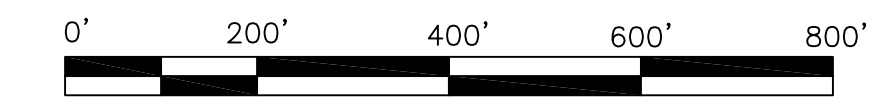
LEGEND  
Scale 1"=200'

MAPPING NOTES  
LOCATION OF COLLECTED MINE DUST SURVEY SAMPLES, AND RESULTS OF COKING AND INCOMBUSTIBLE CONTENT ANALYSIS.



APPENDIX Z-2  
Mine Map Showing Extent of Flame, Incombustible Content, and Coke  
Upper Big Branch Mine – South  
Performance Coal Company  
MSHA ID No. 46-08436

MATCH TO MAP #2



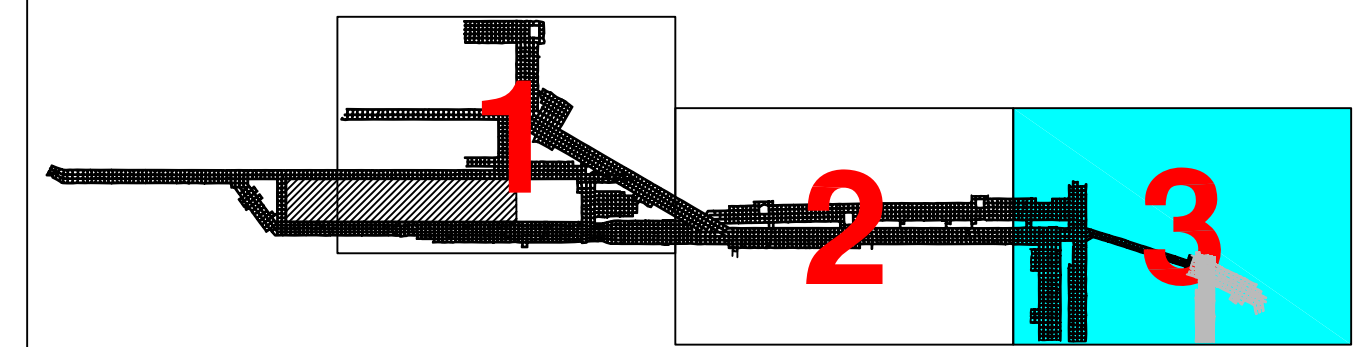
- EXTENT OF FLAME
- 53.6 INCOMBUSTIBLE CONTENT (PERCENT)
- 17E14 SAMPLE NUMBER (INTAKE AIR COURSE)
- 13F18 SAMPLE NUMBER (RETURN AIR COURSE)

- AMOUNT OF COKING
- NONE
  - TRACE
  - SMALL
  - LARGE
  - EXTRA LARGE

LEGEND  
Scale 1"=200'

MAPPING NOTES

LOCATION OF COLLECTED MINE DUST SURVEY SAMPLES, AND RESULTS OF COKING AND INCOMBUSTIBLE CONTENT ANALYSIS.



APPENDIX Z-3  
 Mine Map Showing Extent of Flame,  
 Incombustible Content, and Coke  
 Upper Big Branch Mine - South  
 Performance Coal Company  
 MSHA ID No. 46-08436