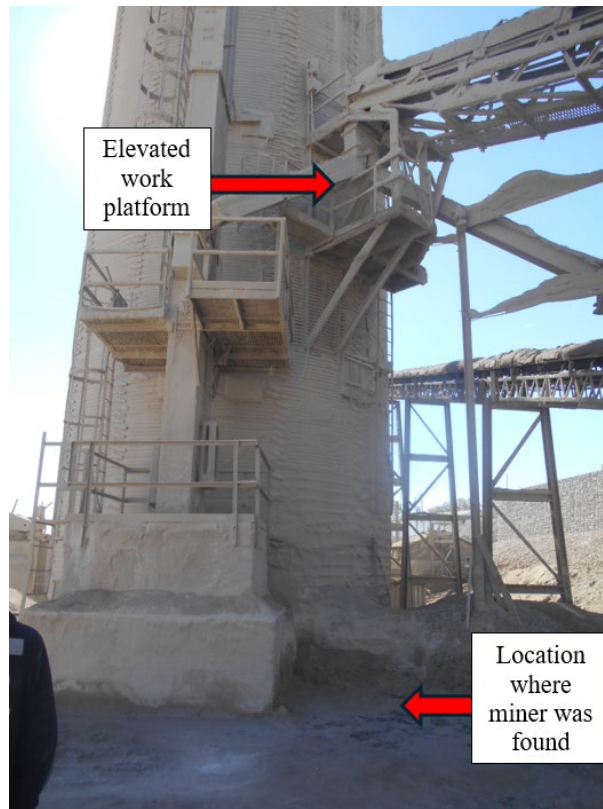


Fatality Alert

MINE FATALITY – On October 16, 2025, a miner was performing work from an elevated platform when they fell approximately 30 feet. The miner died from his injuries.



Location of the accident.

Best Practices

- Provide safe access to all work areas by installing handrails, guarding, or the use of fall protection equipment where there is a risk of miners falling.
- Provide and ensure proper use of fall protection when a fall hazard exists. Ensure fall protection has a suitable fall arrest and secure anchorage system.
- Identify risks and eliminate or control them before beginning activities.
- Conduct workplace examinations to identify conditions that may adversely affect the safety or health of miners.

This is the 25th fatality reported in 2025, and the first classified as “Slip or Fall of Person.”

The information provided in this notice is based on preliminary information only and does not represent final determinations regarding the nature of the accident or conclusions regarding the cause of the fatality.

Report accidents and hazardous conditions: 1-800-746-1553

[msha.gov](https://www.msha.gov) | askmsa@dol.gov | [@MSHA_DOL](https://twitter.com/MSHA_DOL)