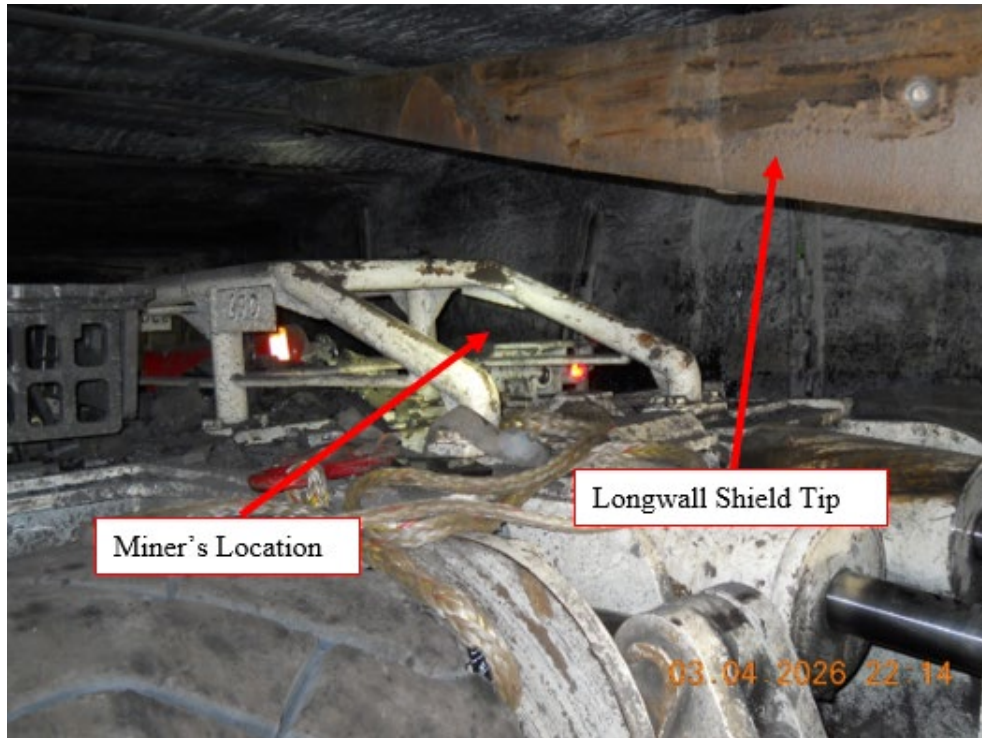


## Fatality Alert

MINE FATALITY – On April 3, 2026, a miner died after a scoop backed into another scoop that was transporting a longwall shield. This collision caused the longwall shield to shift and pin the miner, who was working underneath it.



### Best Practices

- Ensure work areas are clear and that miners position themselves away from potential hazards, including potential pinch points, when moving or positioning equipment.
- Ensure that all miners are trained on the hazards of moving shields.
- Securely block equipment against motion.
- Provide adequate illumination for miners performing maintenance.
- Wear reflective clothing to aid visibility when working around mobile equipment.
- Communicate your presence and intended movements when working near mobile equipment and wait for acknowledgment before moving.

This is the eighth fatality reported in 2026, and the second classified as “Powered Haulage”.

The information provided in this notice is based on preliminary information only and does not represent final determinations regarding the nature of the accident or conclusions regarding the cause of the fatality.

**Report accidents and hazardous conditions: 1-800-746-1553**

[msha.gov](https://www.msha.gov) | [askmsa@dol.gov](mailto:askmsa@dol.gov) | [@MSHA\\_DOL](https://twitter.com/MSHA_DOL)