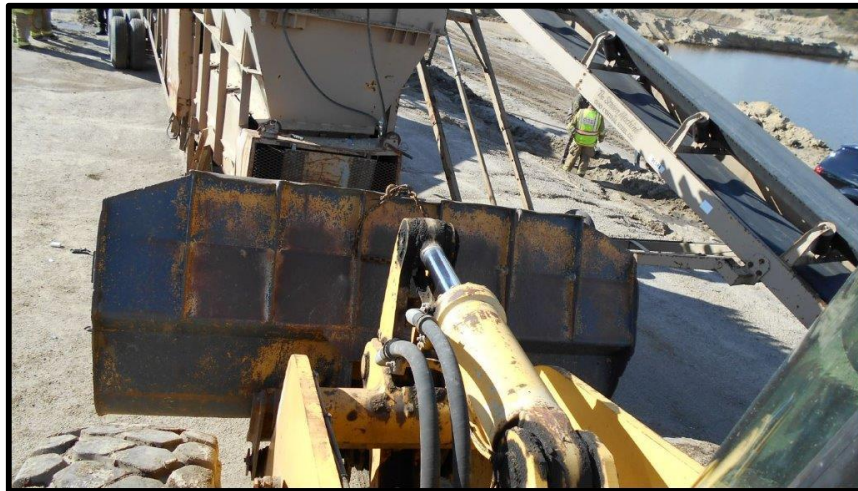


**METAL/NONMETAL MINE FATALITY** – On October 9, 2016, a 61 year old Equipment Operator, with 3 years of experience, was fatally injured at a sand surface mine. The victim was attempting to attach a screen plant to a front-end loader by hooking them together with a steel cable when the equipment moved pinning the victim. The victim was later discovered injured and leaning against the loader bucket. The victim died of his injuries the following day.



## Best Practices

- Never position yourself between mobile equipment and a stationary object. Always be aware of your location in relation to machine parts that have the ability to move.
- Ensure that line of sight, background noise, or other conditions do not interfere with communication.
- Ensure miners are adequately trained for the task they are performing.
- Use a tow bar with adequate length and proper rating when towing heavy equipment.
- Make yourself more visible by wearing brightly-colored clothing or clothing that is distinguishable from surroundings.
- Operate all machinery in accordance with the manufacturer's operating guidelines.

This is the 16th fatal reported in calendar year 2016 in metal and nonmetal mining. As of this date in 2015, there were 16 fatalities reported in metal and nonmetal mining. This is the 4th fatality classified as machinery in 2016. There were 5 machinery accident classification fatalities in the same period in 2015.

---

The information provided in this notice is based on preliminary data ONLY and does not represent final determinations regarding the nature of the incident or conclusions regarding the cause of the fatality.