



# UGM Emission Reduction Technologies

George Lin

**LET'S DO THE WORK.**



# Caterpillar Emission Solutions for UGM Equipment

Ventilation Reduction  
(VR)



Battery Electric  
(in development)

Ventilation Reduction  
(VR) + Flow Through  
Filter (FTF)

EU Stage IV & V

Ventilation Reduction  
(VR) + Wall Flow Filter  
(WFF)

Selected  
models only



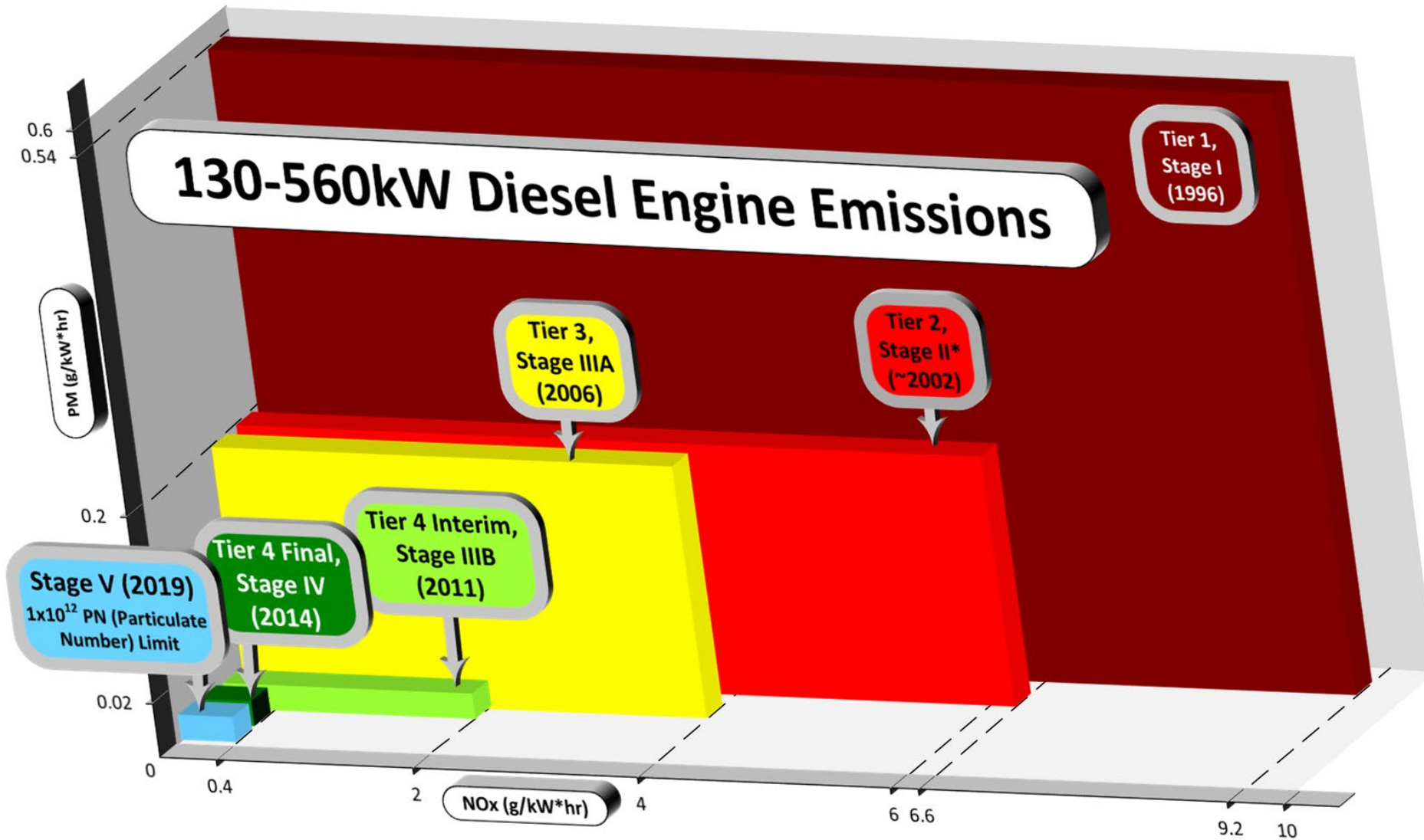
LET'S DO THE WORK.



# DPM reductions for UGM

- Ventilation Reduction options available for many Cat M/NM products:
  - Lower PM engine calibrations
  - Flow Through Filter (DPM reduced 50%)
  - Wall Flow Filter (DPM reduced 98%)

# (Surface) Nonroad Emissions Standards



LET'S DO THE WORK.



Caterpillar: Non-Confidential

# Stage V Emission Reduction for UGM

- Stage V technologies being implemented for M/NM mining:  
Includes Wall Flow Filter and SCR/DEF.  
( Coal has performance requirements that are incompatible with Stage V )
- Additional safety design requirements apply  
(eg. engine shutdown)
- DEF storage may be an issue.  
(Exceeding 32°C/90°F will result in accelerated decay)
- DEF/SCR systems may emit traces of ammonia

# Stage V Aftertreatment Configurations

Engine Models	Power Category [ kW ]	Stage V NOx Limit [ g/(kW*hr) ]	Stage V PM Limit [ g/(kW*hr) ]	Aftertreatment		
C0.5 – C1.5	< 19	7.5 *	0.4	no aftertreatment		
C1.5 - C3.6	19 - 56	4.7 *	0.015	DOC	DPF	
C3.6 – C18	56 – 560	0.4	0.015	DOC	DPF	SCR
C18 – C32	> 560	3.5**	0.045**	DOC		
3500, C175						SCR

\* NOx limit includes HC (hydrocarbons)

\*\* Non-genset limit stated. Gensets >560kW have more stringent emission limits.

**LET'S DO THE WORK.**

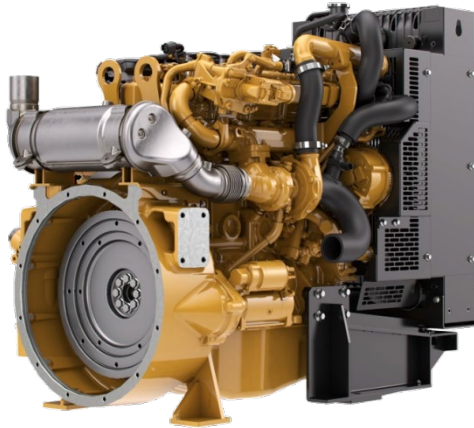


Caterpillar: Non-Confidential



# Aftertreatment Configurations

Examples of engine + aftertreatment configurations:



C3.4  
DOC+DPF



C4.4  
DOC+DPF+SCR



C7.1  
DOC+DPF+SCR

LET'S DO THE WORK.



Caterpillar: Non-Confidential

# Caterpillar R1700, available with Stage V engine.



**LET'S DO THE WORK.**



Caterpillar: Non-Confidential



# Other Stage V models in development

- AD45, AD60



- R2900 LHD



**LET'S DO THE WORK.**



Caterpillar: Non-Confidential

# Battery Electric machines are in development

- Stay tuned!



**LET'S DO THE WORK.**



Caterpillar: Non-Confidential