

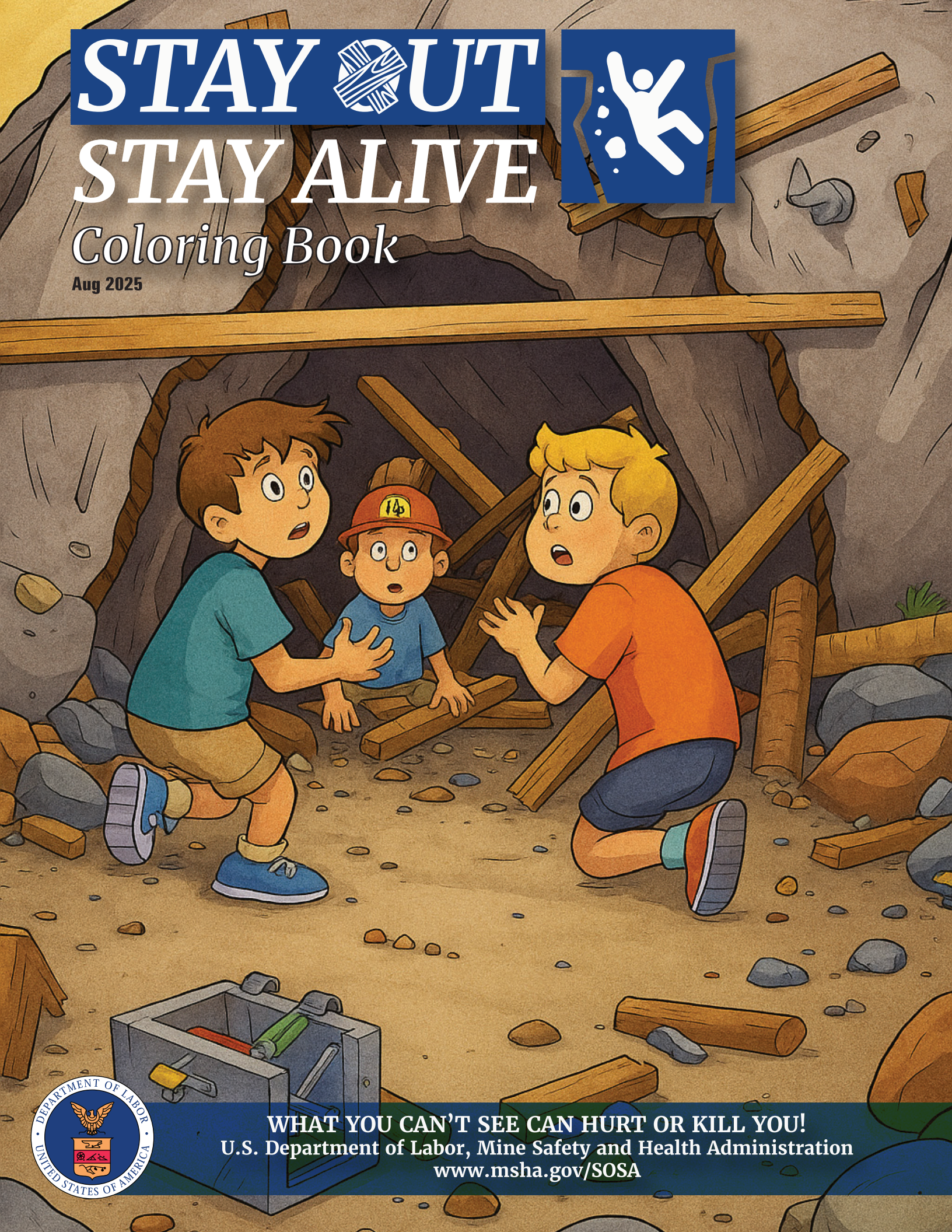
STAY OUT



STAY ALIVE

Coloring Book

Aug 2025



WHAT YOU CAN'T SEE CAN HURT OR KILL YOU!
U.S. Department of Labor, Mine Safety and Health Administration
www.msha.gov/SOSA



Stay Out, Stay Alive is a nationwide public awareness campaign to educate children and adults about the hazards of exploring and playing at active and abandoned mine sites.

The safety initiative's primary mission is to remind people of the one and only key safety practice when encountering an active or abandoned mine site. That is:

STAY OUT - STAY ALIVE.

For more **Stay Out, Stay Alive** content, visit www.msha.gov/SOSA or scan the QR code below.





ATVs CAN SLIDE OR FLIP EASILY ON THE LOOSE SURFACES COMMON IN QUARRIES.

Some mine tunnels stretch for miles, and it's easy to get turned around or blocked in by debris.



Mines often hold leftover dangerous gases that can make you pass out - or worse - with no warning.



MINES ARE LIKE GIANT MAZES
UNDERGROUND:



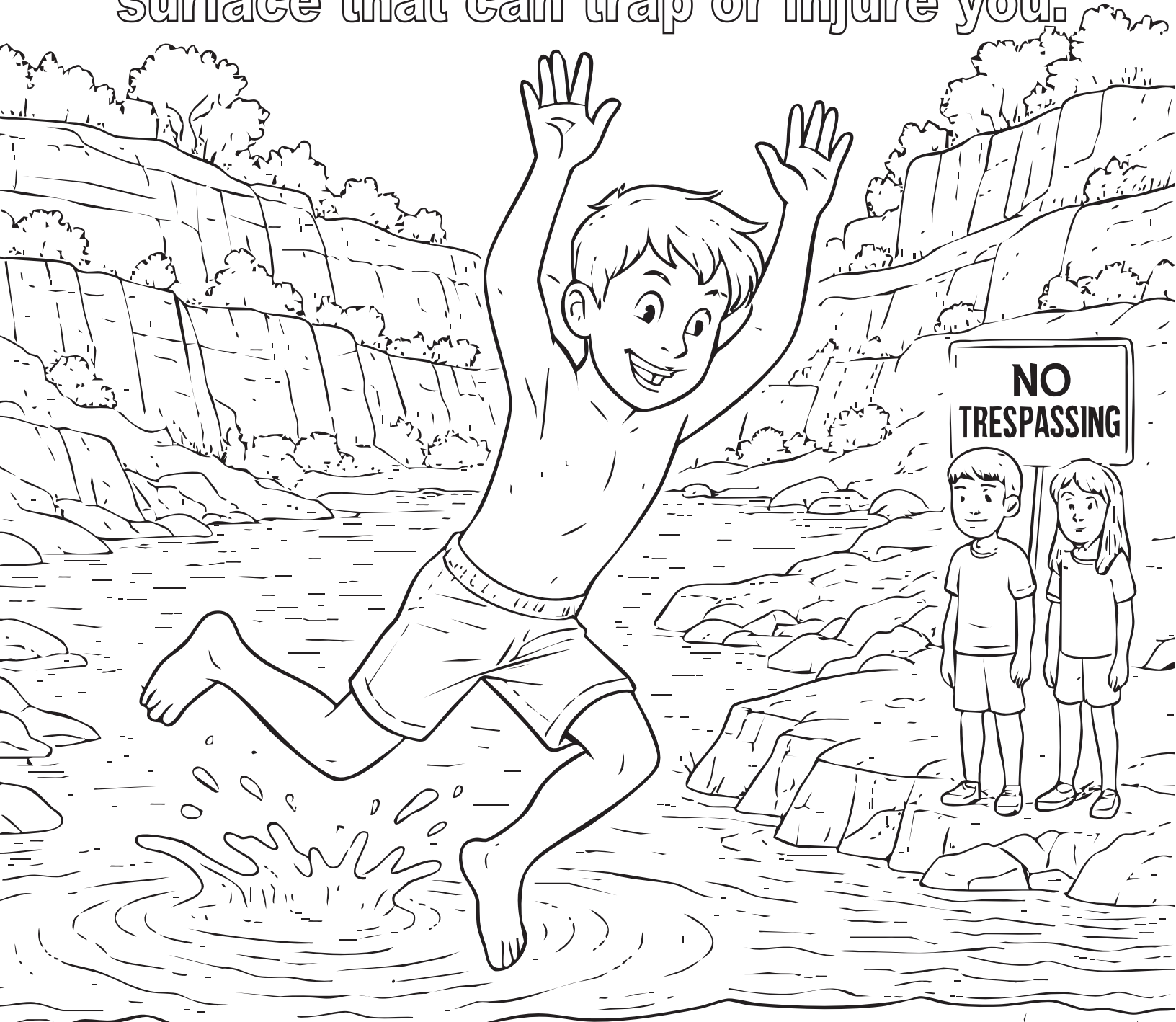
IF YOU GO IN, YOU MIGHT NOT
FIND YOUR WAY OUT AGAIN.

ABANDONED TUNNELS AND LOOSE ROCKS CAN GIVE WAY SUDDENLY, CAUSING CAVE-INS OR FALLS.



STAY OUT  **STAY ALIVE** 

Quarry water can be extremely cold, deep, and filled with junk under the surface that can trap or injure you.



STAY OUT  **STAY ALIVE** 

Use this page to design your own poster.

BE CAREFUL!

Entering an abandoned mine or swimming in a quarry can be as dangerous as playing in the middle of rush hour traffic.



Abandoned mines are not playgrounds.

They are very dangerous places and contain many hazards that you may not be aware of. Here are the dangers shown in this coloring book:

1. Some **mine tunnels stretch for miles**, and it's easy to get turned around or blocked in by debris.
2. Quarry water can be **extremely cold, deep, and filled with junk** under the surface that can trap or injure you.
3. Mines often hold leftover dangerous gases that can make you pass out - or worse - with no warning.
4. Mines are like **giant mazes underground**: if you go in, you might not find your way out again.
5. **ATVs can slide or flip** easily on the loose surfaces common in quarries.
6. Abandoned tunnels and loose **rocks can give way suddenly**, causing cave-ins or falls.

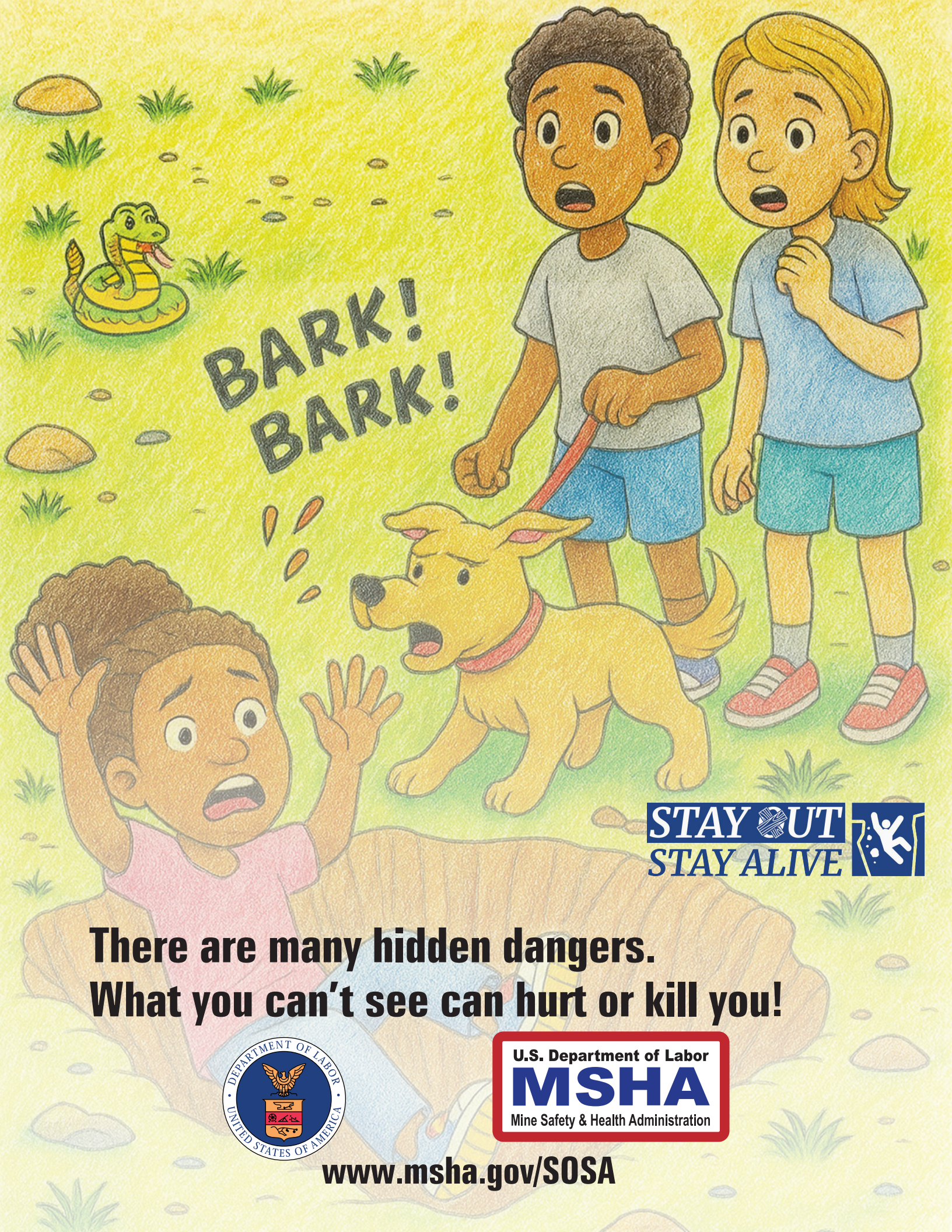
But those are far from the only dangers. Some others are:

- Mines can have holes as deep as tall buildings.
- They can also be home to poisonous snakes, bears, and other dangerous animals.
- Unused or misfired explosives can be set off by the slightest touch.
- Even expert swimmers may encounter trouble in a quarry because steep and slippery slopes can make it difficult to get out of the water.

Tell a friend to Stay Out and Stay Alive!



www.msha.gov/SOSA



**BARK!
BARK!**

STAY OUT
STAY ALIVE



**There are many hidden dangers.
What you can't see can hurt or kill you!**



U.S. Department of Labor
MSHA
Mine Safety & Health Administration

www.msha.gov/SOSA