



# **Quarterly Training Summit**

## **October 2016**

**U.S. Department of Labor**  
**Mine Safety & Health Administration**

**10/18/2016**

# Agenda

12:30pm – Jeff Duncan	Welcome and Introduction of Assistant Secretary Main
12:35pm – Joe Main	Opening Remarks
12:45pm – Tim Watkins	Review of Coal Fatalities Review of Coal Serious Accidents
12:55pm – Larry Trainor	Review of MNM Fatalities Review of MNM Serious Accidents
1:05pm – Kevin Deel	EFSMS
1:10pm	Questions
1:25pm – Laura McClintock	Closing Remarks



# **MSHA Training Summit**

## **Coal Mine Safety & Health**

### **3rd Quarter 2016**

Tim Watkins

[Watkins.Timothy@dol.gov](mailto:Watkins.Timothy@dol.gov)

202-693-9500



# Coal Fatalities

## 3rd Quarter 2016

- Surface of Underground Mines – 2
- Classifications
  - Ignition/Explosion of Gas – 1
  - Powered Haulage – 1



# Coal Fatalities by State 3rd Quarter 2016

- West Virginia – 2



Fatal No. 7 - On Friday July 29, 2016, a 58-year-old miner with 40 years of mining experience sustained fatal injuries when an ignition occurred in the shaft he and another miner were working above. Two miners were welding threaded blocks to secure guarding around the drive-shaft between a motor and dewatering pump. Methane ignited within the shaft, and the victim was in the direct line of the ignition force. On August 4, 2016, the victim died from the injuries received during the accident.





Fatal No. 8 - On Friday September 23, 2016, a 46-year-old miner was fatally injured in a vehicle accident that occurred along a portion of a mine's access/haul road. The victim (passenger) and a coworker (driver) were traveling down an inclined portion of the road when the driver apparently lost control of the pickup truck, causing it to strike the road berm and roll over in the roadway.



# **CMSH: Serious Accidents**







A miner was driving his personal truck to shut off a pump at the end of his shift when the truck lost its brakes and went over the berm of the roadway, traveling over 200 feet and coming to rest at the edge of an impoundment. The driver was transported to the hospital and treated for a broken leg.



# Best Practices

- Ensure traffic rules are standardized and properly posted.
- Ensure miners are aware of hazards when operating personal vehicles on mine property.
- Ensure roadways on embankments are safe to travel and properly protected by guardrails and/or berms.







A miner attempted to start a 400 horsepower, 460 VAC pump motor (435 full load amperes) when two phases short-circuited causing an electrical arc. The heat from the arc escaped the starter enclosure and caused second-degree burns. The short circuit occurred because the high amperage of the motor caused the phase connections to the circuit breaker to loosen over time.

# Best Practices

- Ensure electrical circuits and switches are safely designed and installed.
- Perform complete and thorough electrical examinations.
- Properly maintain electrical circuits to ensure continued safe operation.



# MSHA Training Summit

## Metal and Nonmetal

### 3rd Quarter 2016

Larry Trainor

[trainor.lawrence@dol.gov](mailto:trainor.lawrence@dol.gov)

202-693-9644



# MNM Fatalities 3rd Quarter 2016

- Surface Mines – 5
- Underground Mine – 0
- Classifications
  - Machinery – 2
  - Fall of Highwall – 1
  - Powered Haulage – 1
  - Slip or Fall of Person – 1





# MNM Fatalities by State

## 3<sup>rd</sup> Quarter 2016

- Kentucky – 1
- Tennessee – 1
- Virginia – 1
- North Carolina – 1
- Nevada – 1



# MNM Fatalities by Commodity

## 3<sup>rd</sup> Quarter 2016

- Limestone – 2
- Cement – 1
- Granite – 1
- Magnesite – 1



# MNM Fatalities by Occupation 3rd Quarter 2016

- Hydraulic Excavator Operator – 1
- Leadman/Contractor – 1
- Haul Truck Operator – 1
- Drill Operator – 1
- Mechanic – 1



On July 25, 2016, a 59 year old Excavator Operator, with 17 years of experience, was killed at a limestone quarry. Prior to the accident, the victim was loading shot rock into haul trucks. While waiting for the haul trucks to return, the victim was separating out over sized rocks when the cab of his excavator was struck by falling material from the highwall.



On August 9, 2016, a 33 year old Leadman Contractor, with 4 years of experience, was killed at a cement plant loadout. The victim was attempting to replace the lift cable pulleys on the barge loadout chute, when the anchor point for the temporary rigging separated from the loadout chute and it unexpectedly fell. The falling loadout chute caused the lift cables to tighten and the lift cables pinned the victim to the loadout chute causing fatal injuries.

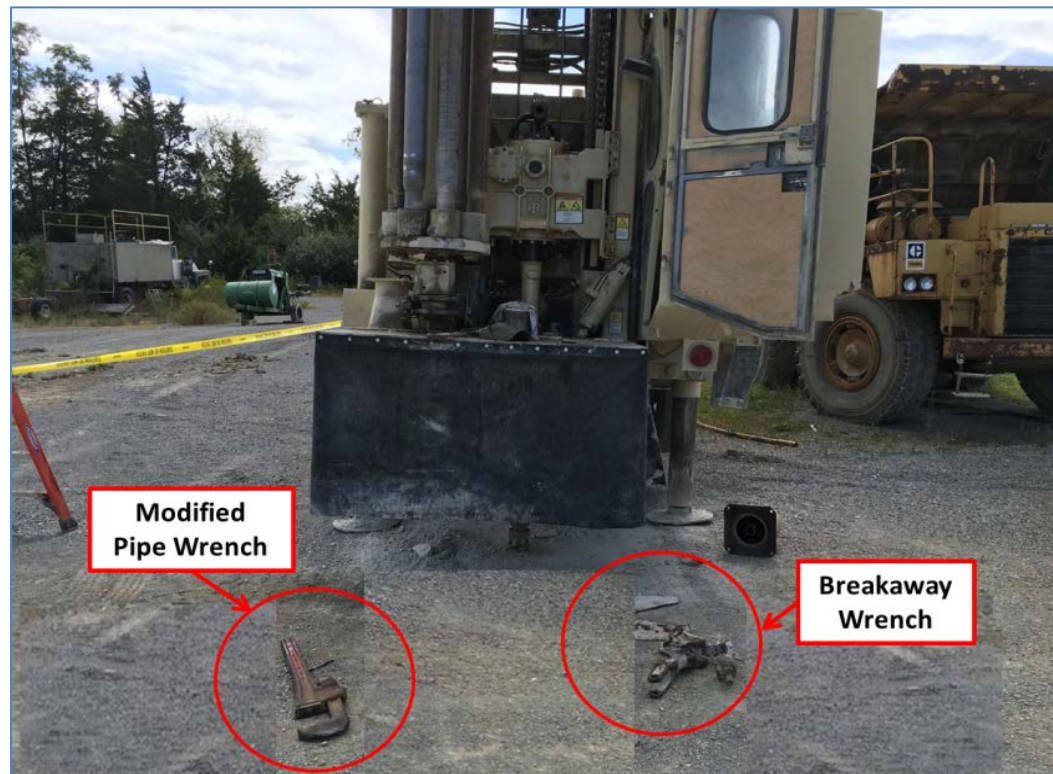


On September 8, 2016, a 58-year old Haul Truck Operator with 23 years of experience was killed at a granite mine. The victim was operating a Caterpillar 773E haul truck and was returning to the pit to be loaded with shot rock. The truck veered from the right side of the haul road to the left and traveled over the berm at the top of the highwall. The truck landed upside down approximately 150 feet below. The victim was found outside the haul truck.





On September 21, 2016, a 52 year old contract drill operator / mechanic, with more than 30 years of experience, was killed at a limestone mine while attempting to remove the spindle cap from the top of the drill head while standing on the drilling deck. The victim was using a modified pipe wrench in an attempt to loosen the spindle cap. As the victim activated the drill's rotation lever, the wrench swung and struck him in his abdomen. The victim was transported to a local hospital and died later that day as a result of his injuries.



On September 15, 2016, a 60 year old Mechanic, with 28 years of experience, was fatally injured at a Magnesite facility. The victim was seriously injured when he fell while dismounting a front end loader. The victim was hospitalized and died on September 26, 2016.



# **MNM: Serious Accidents**



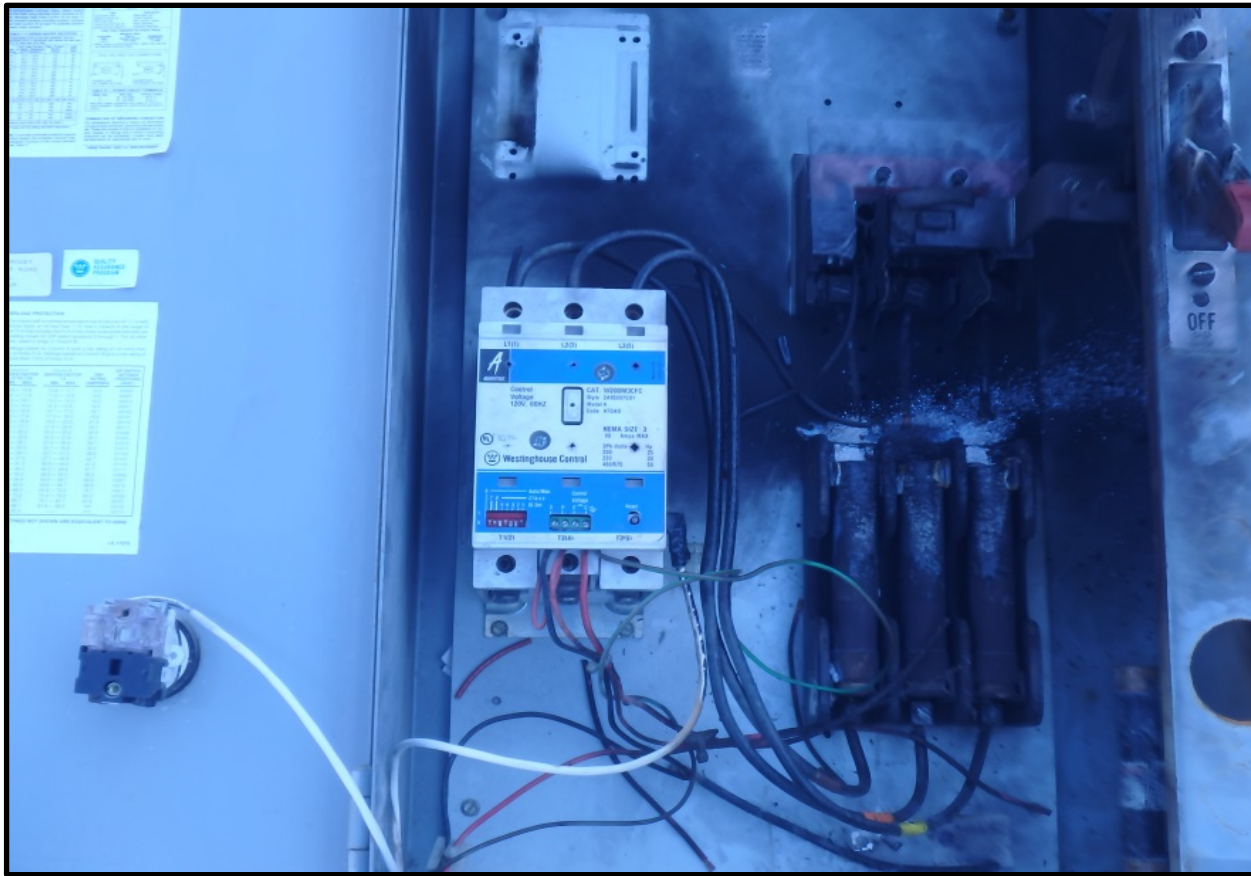


A dozer operator ran over a parked pickup truck. The pickup driver attempted to drive closer to the dozer instead of parking next to the conveyor and got stuck in the loose gravel. The driver was out of the pickup trying to free it and was motioning the dozer operator when the dozer ran over the truck.





A process control supervisor with six weeks of experience at this facility entered a waste dust discharge and collection area to unchoke a long, nearly-vertical 12-inch diameter pipe. When he struck the bottom of the pipe with a sledge hammer, fine material heated to over 1200oF flushed down the pipe and spilled over him. He suffered life-threatening burns.



An electrician was working on an energized three-phase electrical circuit for a water pump. After replacing a blown fuse, the electrician noticed the pump motor was single-phasing. While attempting to attach the third phase, he accidentally dropped the wire across an energized lug. The electrician received a severe flash burn to his hands..





# Best Practices

- Ensure a travel lane is clear before moving a vehicle. Train miners to not walk or stand in travel lanes.
- De-energize, lock out and tag out all power circuits and electrical equipment before performing any work on electrical circuits and equipment.
- Provide and wear appropriate personal protective clothing, such as high-temperature protective jackets, pants, shoes and helmets, when handling or working around superheated materials



# **MSHA Training Summit**

## **Educational Field and Small Mine Services (EFSMS)**

Kevin Deel

[deel.kevin@dol.gov](mailto:deel.kevin@dol.gov)

202-693-9585



# Questions?



Use this link to submit training questions

[mshatraining@dol.gov](mailto:mshatraining@dol.gov)

