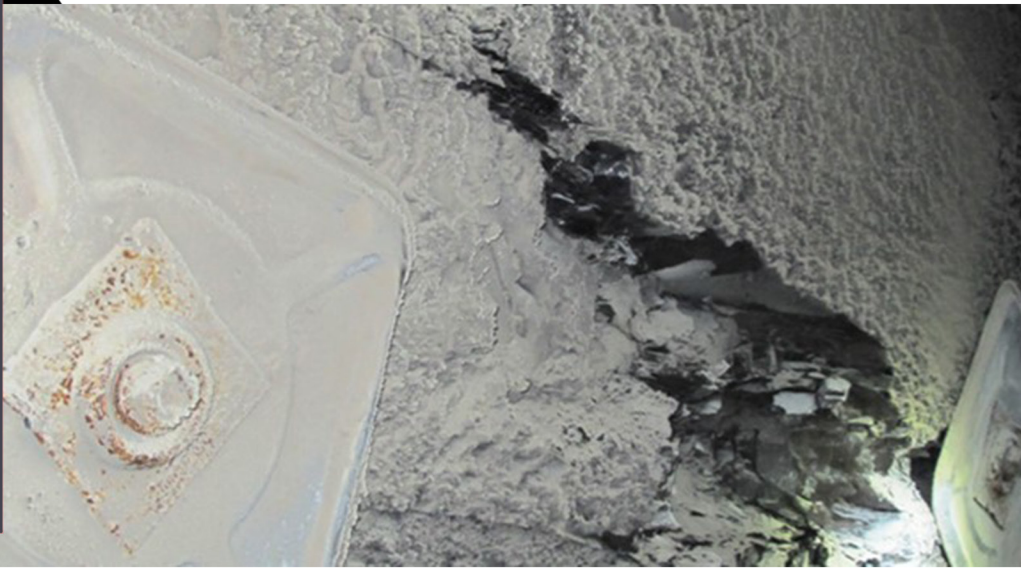




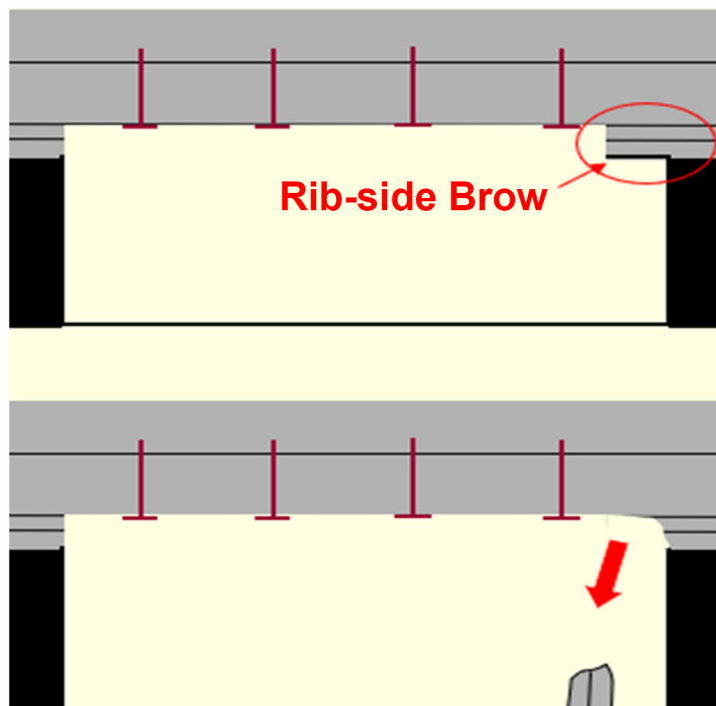
## Preventive Roof/ Rib Outreach Program Coal PROP



## WHAT IS A BROW?

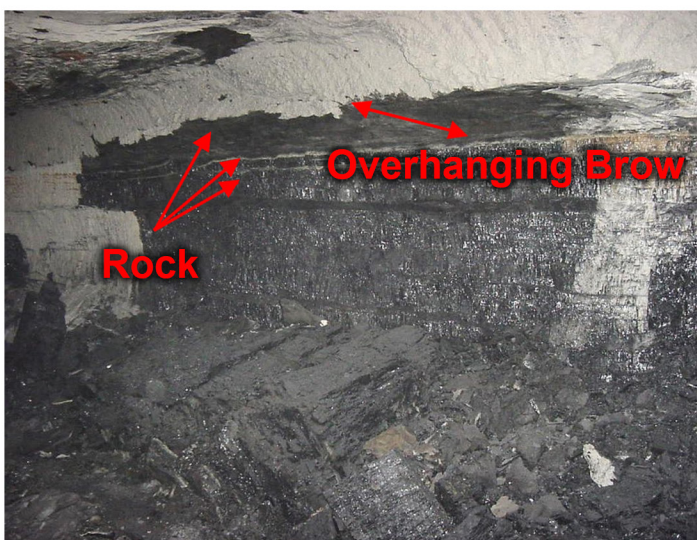
A brow is a block of overhanging material that is *not* flush with the roof *and* does not have rib below it.

A piece of overhanging material.



## SUPPORT

- Be sure to bolt THROUGH the brow.
- Confirm a solid anchorage horizon.
- The bearing plate should be large and strong enough to support the brow.
- Brackets, mesh, channel, straps, monster mats, and other skin control can further strengthen support.



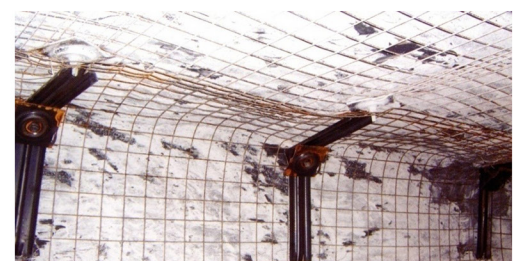
## HAZARDS

Bedding planes or geologic structure in the roof divide rock into layers.

Brows form when the rib sloughs below a stronger layer of rock.

When a brow forms along a pillar rib, more support may be necessary.

Brows can also occur in intersections with the change of mining heights.



## REMOVING BROWS

Evaluate the area and alert your supervisor of any brows.

The safest way to remove brows is with a continuous miner.

If scaling is necessary to remove the brow: look at it from different angles, scale from good to bad ground, and use the proper length bar.

