

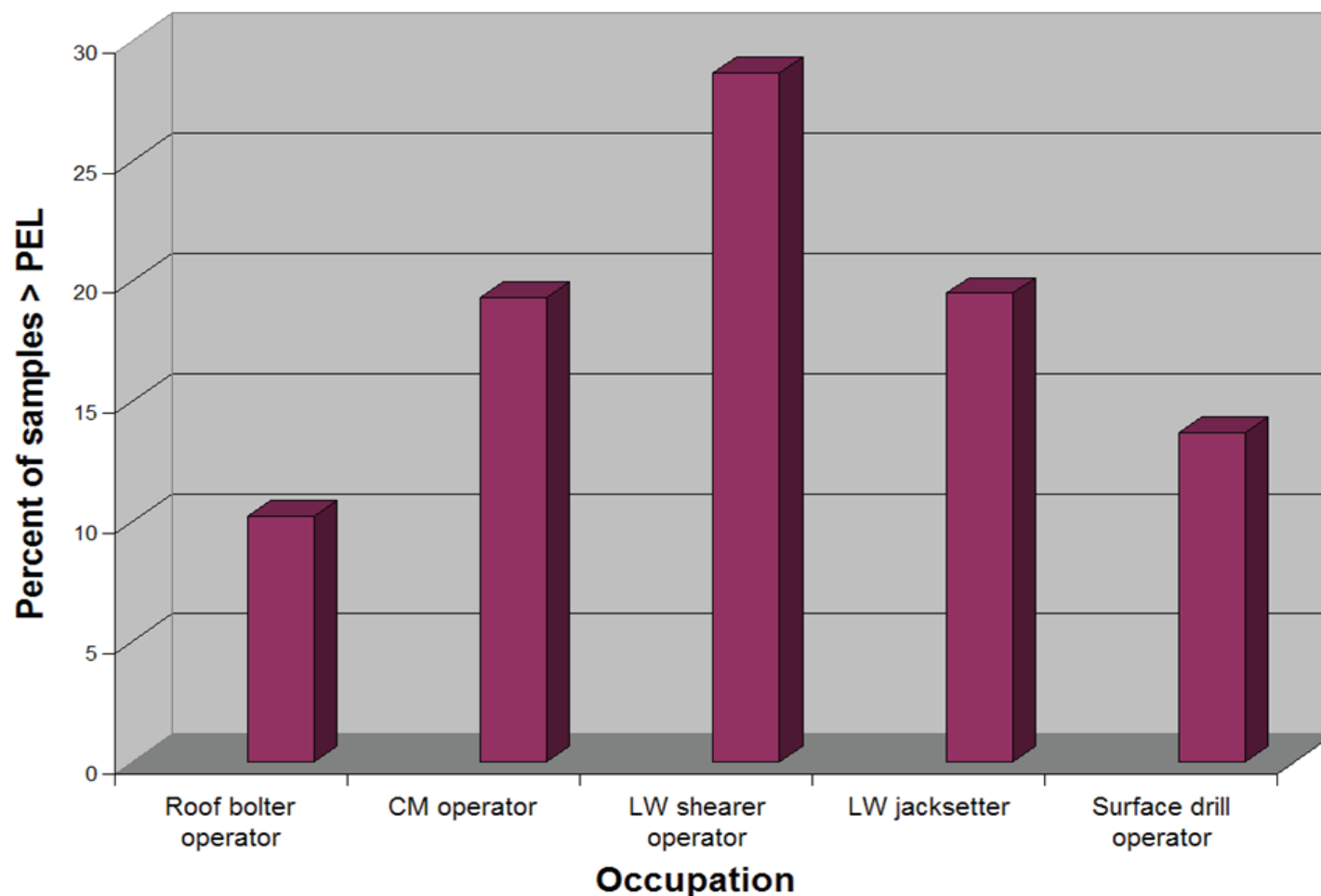
---

# Health Division Overview

---

October 23, 2014

## Percentage of MSHA inspector samples during 2003–2007 that exceeded reduced PELs



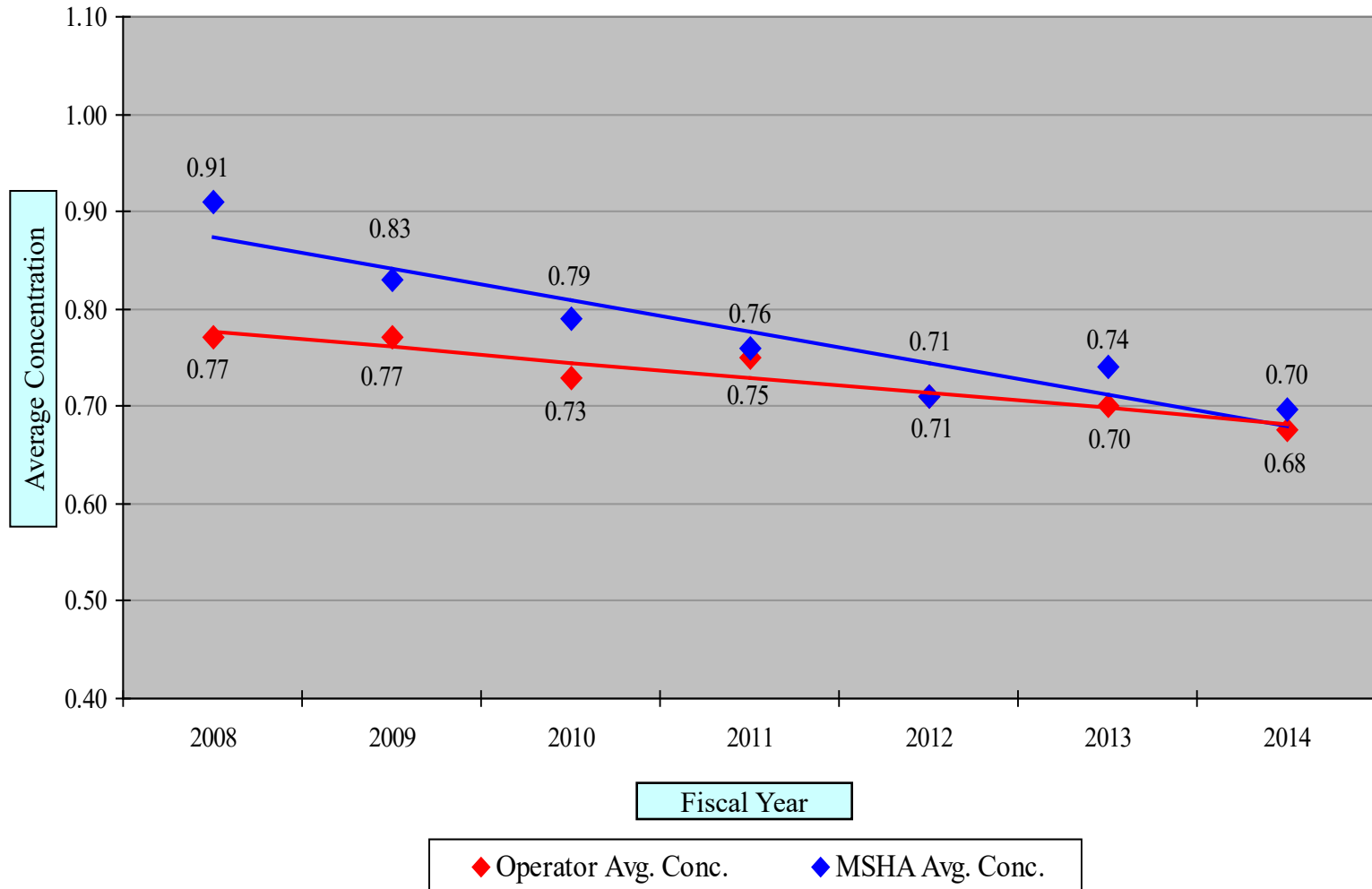
---

# Respirable Dust

---

# Underground Mines

## Average Dust Concentration by Fiscal Year



# Producing DWPs by Occupation Type and Status Date October 20, 2014

District	Original Entity Status Date:	Bulldozer Operator		Highwall Drill Operator		Other Occupations		Total
		Before 8/1/14	After 8/1/14	Before 8/1/14	After 8/1/14	Before 8/1/14	After 8/1/14	
2		39	215	3	158	29	6	450
3		7	56	3	28	3		97
4		12	124	7	88	7		238
5		7	47	5	31	1	1	92
6		15	118	4	80	9		226
7		17	123	7	84	6	2	239
8		4	96	1	49	14		164
9		2	37		47	5	9	100
10		1	33		9		3	46
11		4	78	10	42	5		139
12		5	80		54	5	1	145
Nation		113	1007	40	670	84	22	1,936
Total DWPs Established Due to the New Rule to Date:								1,823

\* Includes all producing DWPs entered into the MSHA Data Warehouse as of 10/6/14.

Note: Most of the new DWPs established after 8/1/2014 have a status date effective 10/1/2014. 128 of the DWPs originally established prior to 8/1/2014 have a current entity status date after 8/1/2014. 93 Bulldozer Operators and 31 Highwall Drill Operators were re-established.

# Dust Sample Counts by Sample Type

## August 1 – September 30, 2014

**Total Count and Counts Exceeding Dust Standards, ECV Values\* and 100 µg/m<sup>3</sup> Quartz**

Sample Type	Sample Type Code	Operator Samples					MSHA Samples						
		Total Valid	Exceed Std		Exceed ECV		Total Valid	Exceed Std		Exceed ECV		Exceed 100 µg/m <sup>3</sup> Qtz	
			#	%	#	%		#	%	#	%	#	%
DO	1	2,411	59	2.4	34	1.4	360	11	3.1	7	1.9	4	1.1
NDO	2	6					1,439	15	1.0	6	0.4		
DA	3	739	8	1.1	6	0.8	389	6	1.5	3	0.8	4	1.0
DWP	4						198	1	0.5			4	2.0
PART 90	5	45	2	4.4	2	4.4	35	1	2.9	1	2.9		
NDA	6						30	1	3.3				
INTAKE	7						346	2	0.6	2	0.6		
NDWP	8						1,452	1	0.1	1	0.1		
INVALID	0						6						
Total:		3,201	69	2.2	42	1.3	4,255	38	0.9	20	0.5	12	0.3

\* Uses CMDPSU ECV values and the applicable dust standard for each sample.

# Citations Issued Since August 1, 2014

- 19 citations issued based on MSHA Single Shift Sampling
- 6 citations issued based on Operator Consecutive Shift Sampling

# Dust Sample Counts by Sample Type

## August 1 – September 30, 2014

### Total Count and Counts Exceeding 2016 Dust Standards and ECV Values\*\*

Sample Type	Sample Type Code	Operator Samples					MSHA Samples				
		Total Valid	Exceed Std		Exceed ECV		Total Valid	Exceed Std		Exceed ECV	
			#	%	#	%		#	%	#	%
DO	1	2,411	126	5.2	76	3.2	360	18	5.0	11	3.1
NDO	2	6					1,439	37	2.6	20	1.4
DA	3	739	19	2.6	8	1.1	389	16	4.1	8	2.1
DWP	4						198	2	1.0		
PART 90	5	45	4	8.9	3	6.7	35	4	11.4	2	5.7
NDA	6						30	1	3.3		
INTAKE	7						346	7	2.0	3	0.9
NDWP	8						1,452	4	0.3	3	0.2
INVALID	0						6				
Total:		3,201	149	4.7	87	2.7	4,255	89	2.1	47	1.1

\*\* Applies maximum base dust standard of 1.5 mg/m<sup>3</sup> for MMU, DA and DWP samples and 0.5 mg/m<sup>3</sup> for intake air and Part 90 miner samples. Uses CPDM ECV values for operator face area and Part 90 miner occupational samples, and CMDPSU ECV values for other samples.