



Mine Data Retrieval System

**STAKEHOLDER WEBINAR
OCTOBER 19, 2017**

**Presented by:
Syed Hafeez, Reza Noorani,
Nancy Cleeland, JR Wycinsky**



AGENDA

- **Introduction**
- **Current Mine Data Retrieval System (MDRS) Overview**
- **Vision Forward – MicroStrategy Integration**
- **Examples of Data Visualization**
- **New MSHA.gov Safety Materials Page**
- **Next Steps**
- **Q&A**

MDRS INTERFACE - <https://arlweb.msha.gov/drs/drshome.htm>



Mine Data Retrieval System

Jump To: - [Mine ID](#) - [Operator or Mine Name](#) - [Contractor ID](#) - [Contractor Name](#) - [Current Controller](#) - [Extended Search Page](#) - [High Dollar Report](#)
- [Citations/Orders by Case Number](#)

Important Starting Information

* We are updating all information provided by the Mine Data Retrieval System (MDRS) daily. This occurs from 5:00 a.m. to 5:45 a.m. Eastern time. During this period you may notice some data will not be available. Also, the data used for the MDRS is based on data gathered from various MSHA systems. As there may be a lag time in data being entered into those systems, there will also be a lag in the reflection of that data on the MDRS.

MSHA's Mine Data Retrieval System (MDRS) is based on the history of each *mine*. Many mines have been owned by *more than one operator* during their histories. We are providing you with the "**Operator History**" for each of the mine searches you do. ([See More...](#))

Injury Rates: For an explanation of the calculation of injury rates, please use [this link](#).

Mine Information/Contractor Information Search Instructions

Please enter a valid MSHA Mine ID or Contractor ID, if you know it. This is the quickest and most concise way to search for information. Another way to search is by name of the operator/contractor **or** mine name. You may enter a portion of the name or all of it, if you know the name. The more information you provide, the more refined your results will be.

Mine Information Search

Mine Identification Number (ID) Search

If you know the Mine ID, use this function. It is the quickest way to find your information!
Only enter the 7 digits of the Mine ID. Do not include the dash.

MSHA Mine ID : (7 Digits - No Dash)

SEARCH

MDRS – CURRENT SERVICES

- Available to the public
- Ability to obtain comprehensive mine data
 - Mine location, status, ownership history
 - Inspections, accident, violation history
 - POV and health samples data
 - Employment/Production
- Search by mine, state, contractor, operator, or controller.



MDRS – CURRENT LIMITATIONS

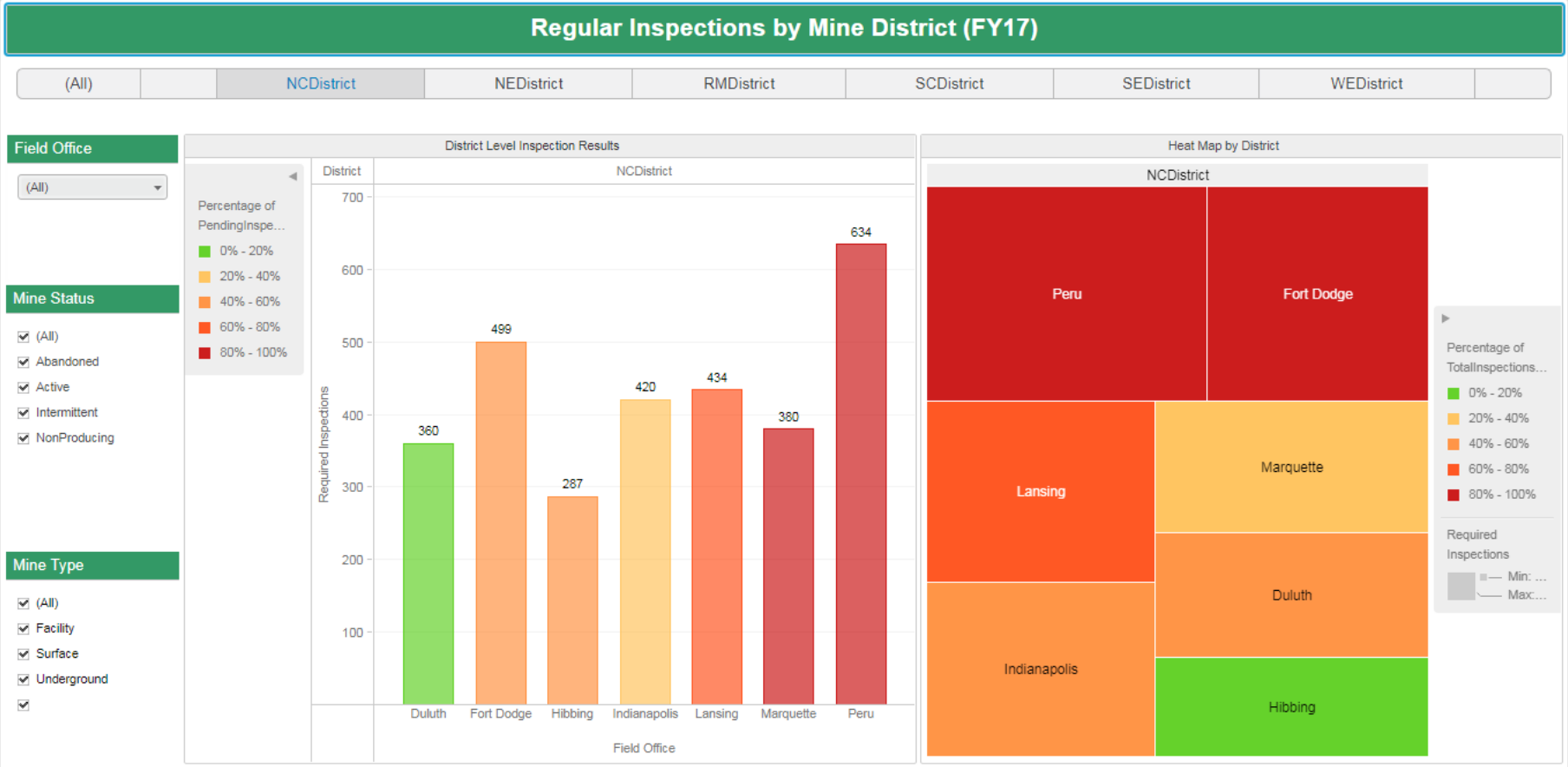
- **Search functionality**
 - Cannot search more than **1** entity at a time
 - Search results are not ranked in order of relevance
- **Lack of visualizations**
- **Cannot quickly download/manipulate data**
- **User interface, look and feel need updating**



BENEFITS OF MICROSTRATEGY INTEGRATION

- Augment existing functionalities
- Intuitive User Interface (ease of use)
- Faster data processing
- Slice and dice data
 - Query on multiple parameters
 - Create heat maps, charts, and other visualizations
 - Download raw data and/or report for further analysis
- Enhanced search capability
 - Pull up more than 1 entity at a time
 - Ability to query, and filter on multiple parameters

DASHBOARD VISUALIZATION EXAMPLE 1



DASHBOARD VISUALIZATION

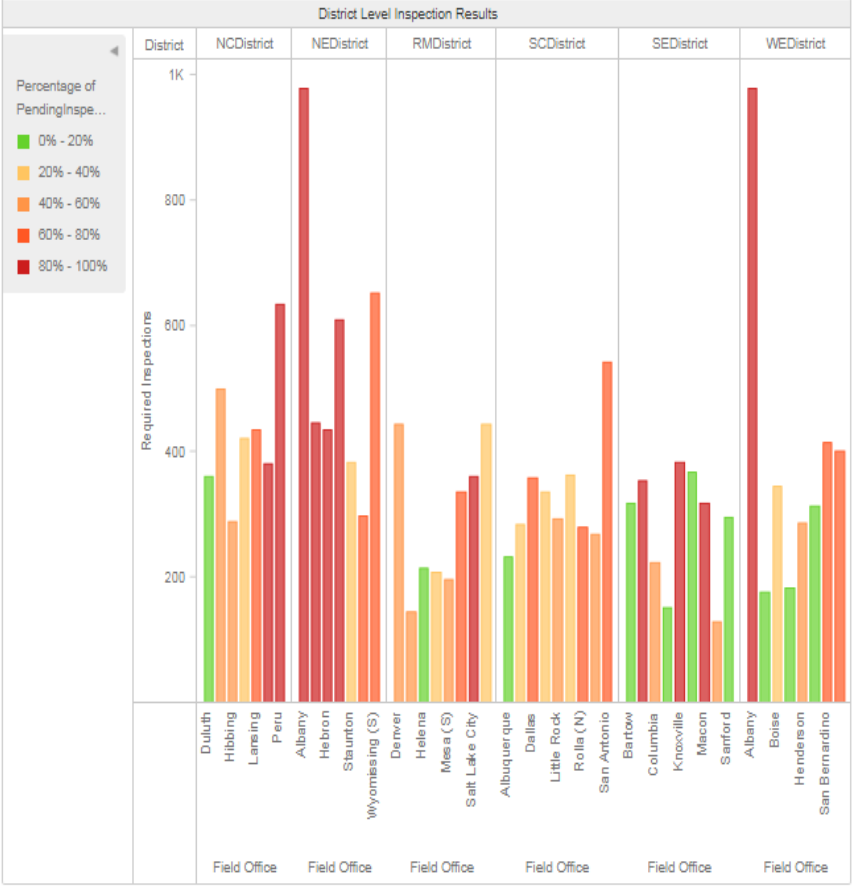
EXAMPLE 2

Regular Inspections by Mine District (FY17)

(All)	NCDistrict	NEDistrict	RMDistrict	SCDistrict	SEDistrict	WEDistrict
-------	------------	------------	------------	------------	------------	------------

Field Office

(All)



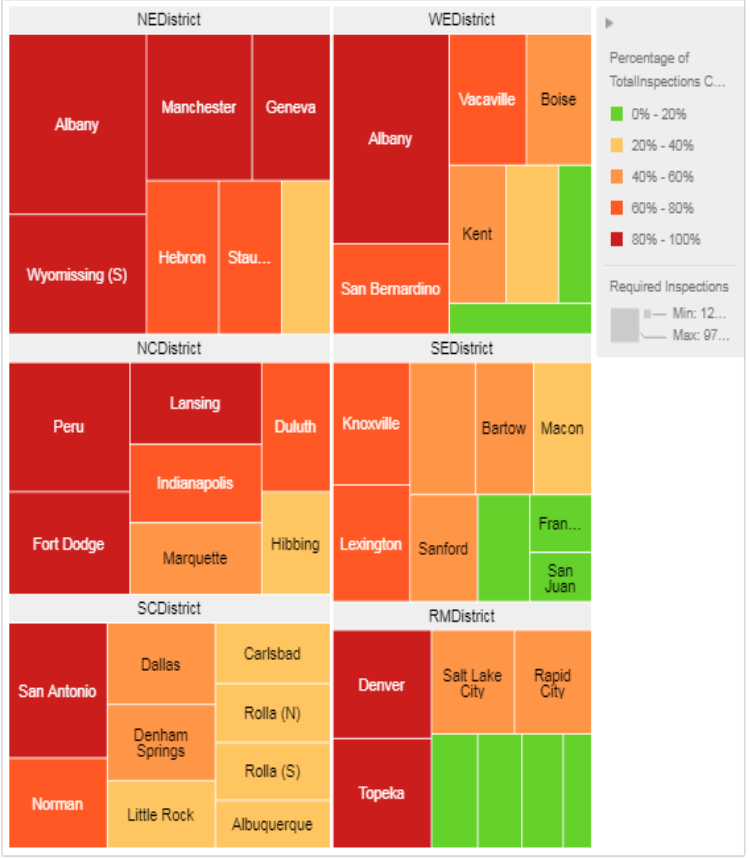
Mine Status

- (All)
- Abandoned
- Active
- Intermittent
- NewMine
- NonProducing
- Temple

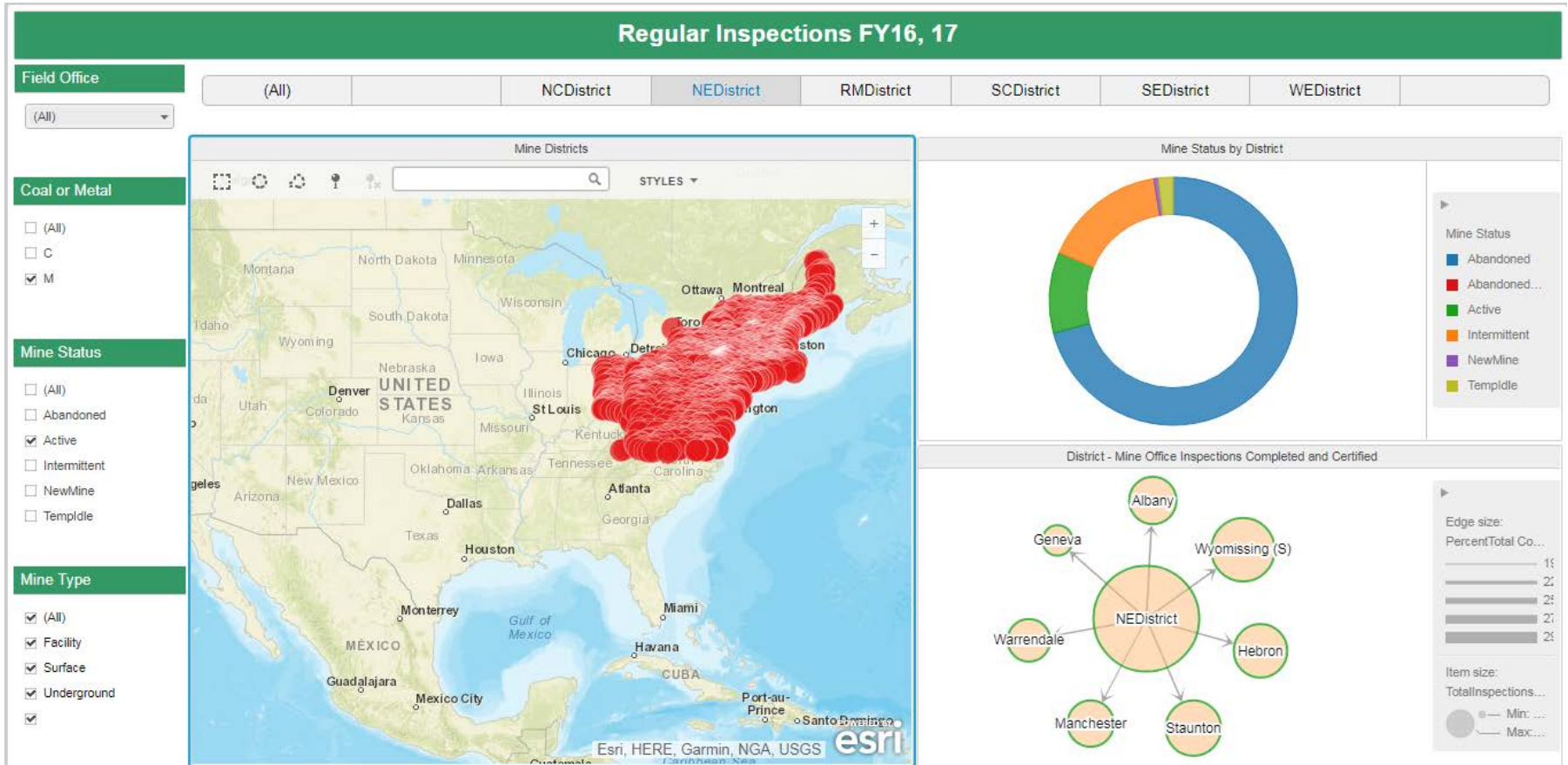
Mine Type

- (All)
- Facility
- Surface
- Underground
-

Heat Map by District

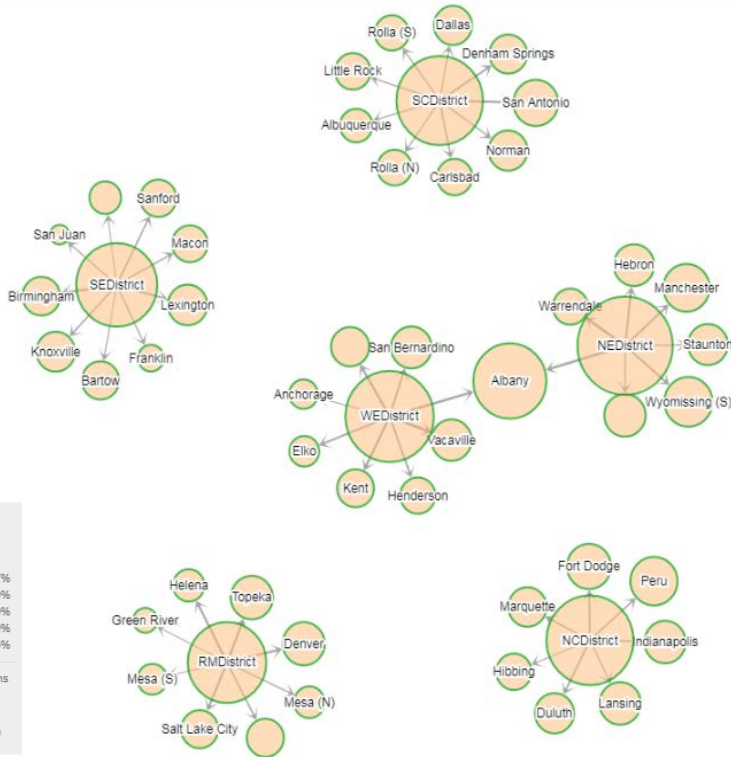


DASHBOARD VISUALIZATION EXAMPLE 3

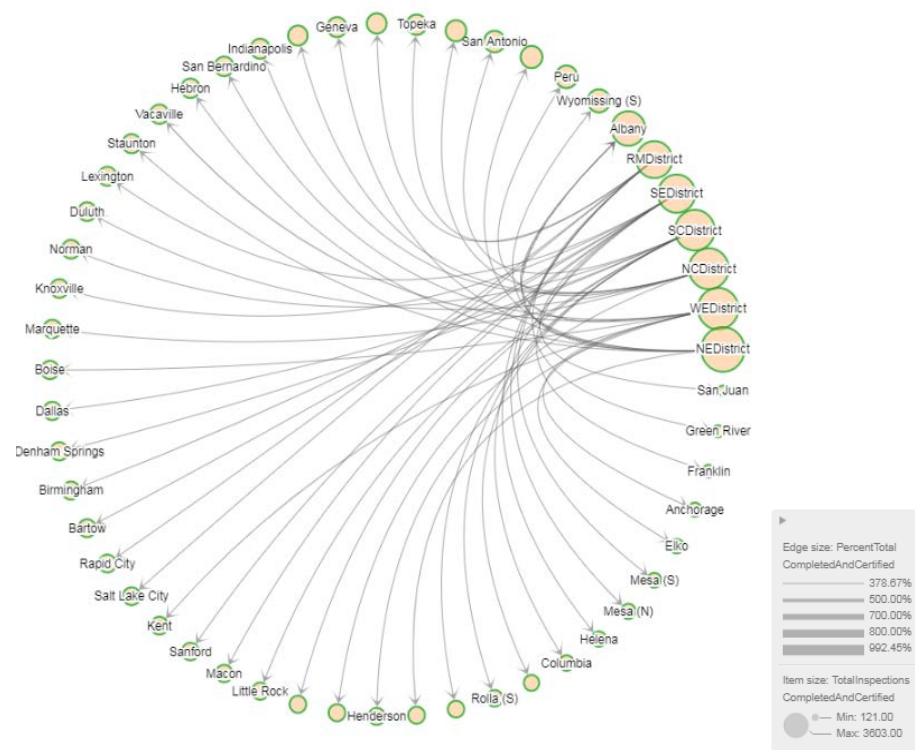


DASHBOARD VISUALIZATION EXAMPLE 4

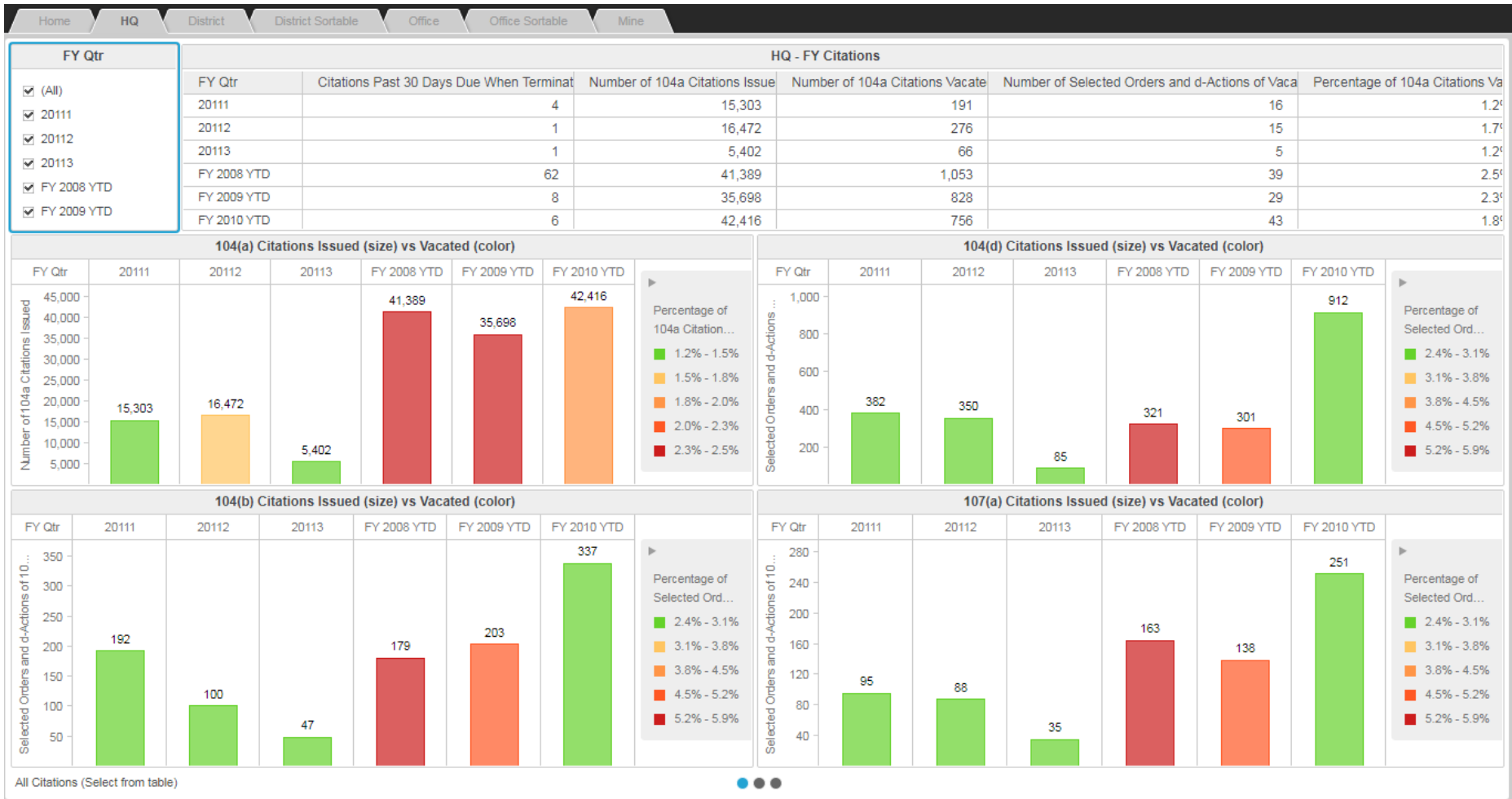
District Mine Office Completed and Certified



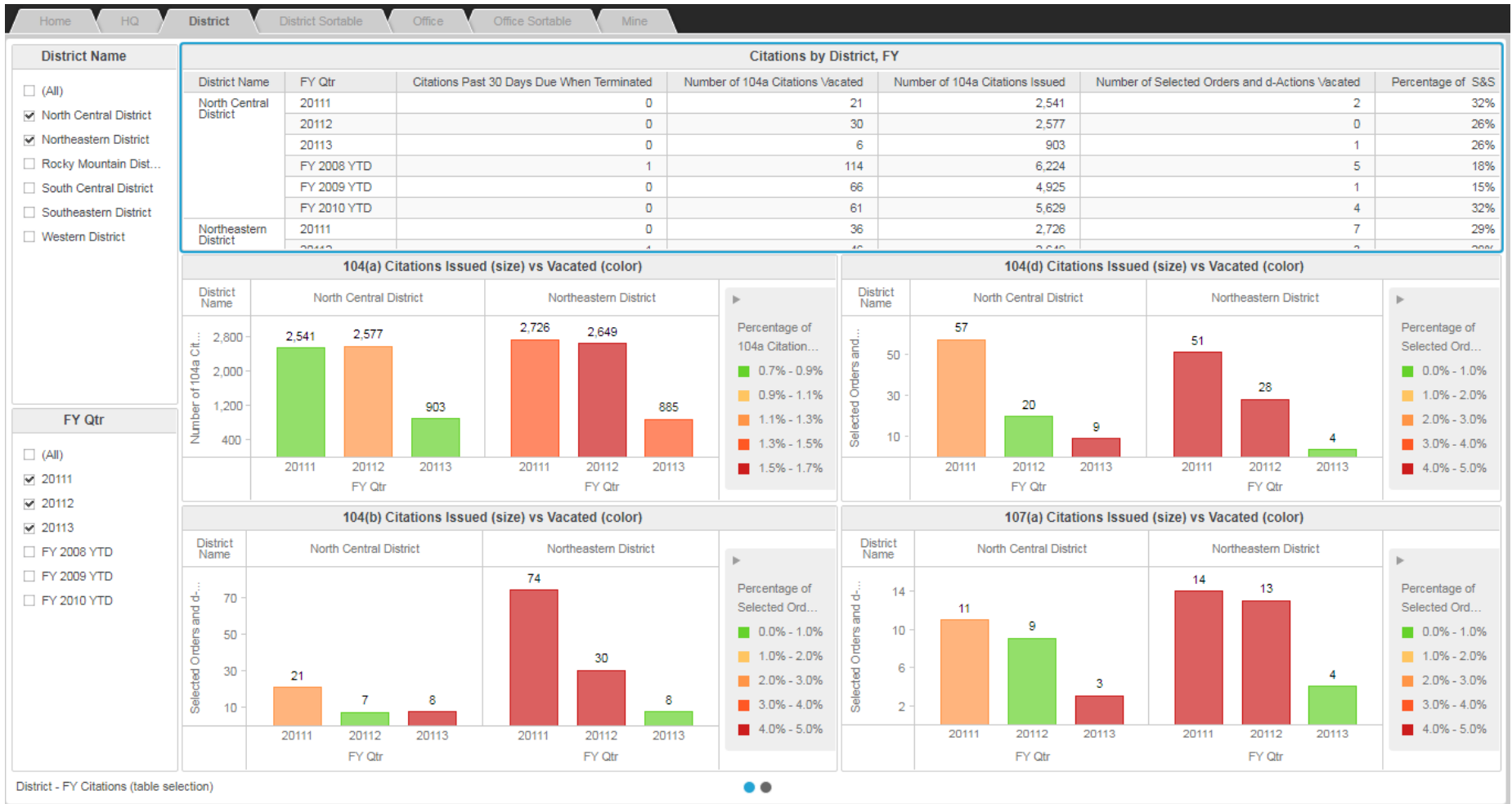
District Mine Office Completed and Certified



DASHBOARD VISUALIZATION EXAMPLE 5

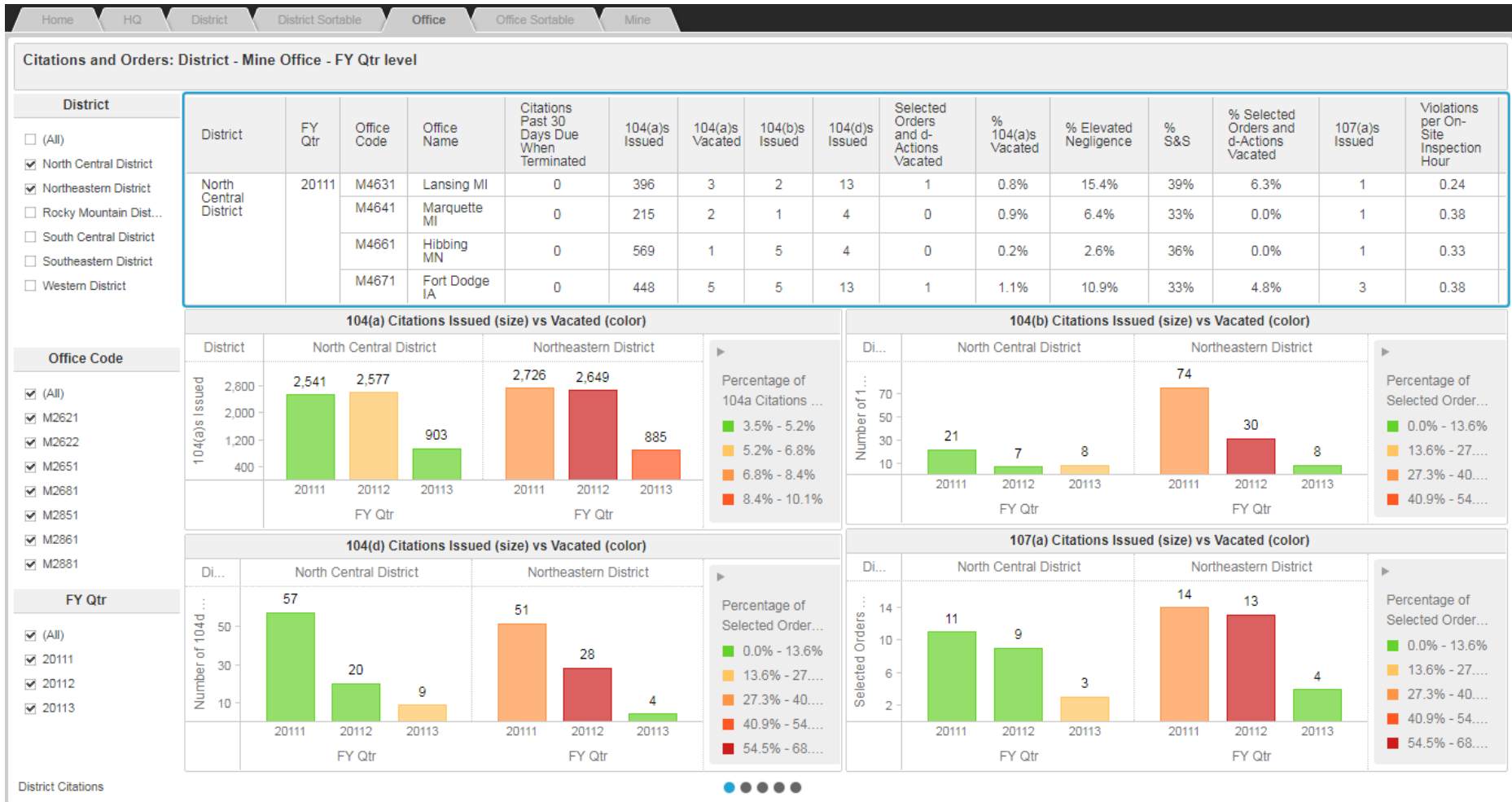


DASHBOARD VISUALIZATION EXAMPLE 6



DASHBOARD VISUALIZATION

EXAMPLE 7



NEW SAFETY MATERIALS SEARCH PAGE

[HTTPS://WWW.MSHA.GOV/NEWS-MEDIA/ALERTS-HAZARDS/FILTER](https://www.msha.gov/news-media/alerts-hazards/filter)

ABOUT ▾ NEWS & MEDIA ▾ DATA & REPORTS ▾ REGULATIONS ▾ COMPLIANCE & ENFORCEMENT ▾ TRAINING & EDUCATION ▾ SUPPORT & RESOURCES ▾

[MSHA HOME](#)

Enter Search Term

Document / Page Type

[Select All](#)

- Best Practices
- Close Call/Serious Accident
- Safety/Health Alerts
- Slide Presentations

Mine Category

- Coal
- Metal and Non-Metal

Topic

- Air Quality / Lung Health
- Contractors
- Conveyors
- Diesel Exhaust
- Drilling / Blasting / Explosives
- Electrical
- Falls
- Fire Hazards
- General Safety
- Ground Control / Highwalls / Scaling
- Hazardous Materials / HazCom
- Machinery / Equipment
- Maintenance
- Materials Storage / Handling
- Mobile Equipment / Haulage
- Noise / Hearing Protection
- Personal Protective Equipment
- Pipelines/pipes
- Roof and Rib
- Seasonal Reminders
- Water Safety

Mine Safety and Health Materials

[Share](#) [Tweet](#) [in Share](#) [Email](#) [Print](#)

MSHA offers a variety of materials to assist trainers and mine operators in promoting a safe and healthy environment at U.S. mines. Use the search column or scroll through the most recent listings below to find materials for safety talks and trainings at your mine. This database is under development and being expanded. Please help us improve by sending suggestions to webhelp@dol.gov.

Search Results

Close Call/Serious Accident

Posted 10/10/2017

MNM Serious Accident Alert Underground - Welding

Underground Lead-Zinc Ore - Two miners were welding a patch on a leaking fuel tank when the tank exploded seriously injuring both miners.

Close Call/Serious Accident

Posted 10/5/2017

MNM Close Call Accident Alert Surface - Train

Surface – Sand & Gravel – On July 24, 2017, a front-end loader was hit by a train while crossing the railroad tracks.

Close Call/Serious Accident

Posted 9/18/2017

Guarding Slide Presentation: Guarding Conveyor Belts at Metal and Nonmetal Mines

This slide presentation, compiled in 2010, provides detailed information to help the metal and nonmetal mining industry meet MSHA's requirements for guarding conveyor belts. Photos of a variety of

Safety/Health Alerts

Posted 8/24/2017

MNM Serious Accident Alert Surface - Welding

Surface – Limestone – A miner performing maintenance on a screening plant received a shock from a portable welder and suffered serious injuries. The accident occurred on July 20,

Safety/Health Alerts

Posted 8/17/2017

MNM Serious Accident Alert Surface – Portable Crusher

Surface – Industry Sand – Miners were working to unplug a crusher and after the obstruction was cleared, the

NEW FATALITY DATABASE PAGE

[HTTPS://WWW.MSHA.GOV/DATA-REPORTS/FATALITY-REPORTS/SEARCH](https://www.msha.gov/data-reports/fatality-reports/search)

ABOUT ▾ NEWS & MEDIA ▾ DATA & REPORTS ▾ REGULATIONS ▾ COMPLIANCE & ENFORCEMENT ▾ TRAINING & EDUCATION ▾ SUPPORT & RESOURCES ▾

[MSHA HOME](#)

Search By Title

Mine Category

- All Fatalities
- Coal
- Metal and Non-Metal

Incident Date

Start date	End date
<input type="text" value="2017-01-01"/>	<input type="text" value="2017-12-31"/>

E.g., 2017-10-12 E.g., 2017-10-12

State / Province

All States/Provinces ▾

Location of Accident

[Select All](#)

- Facility
- Surface
- Underground

Accident Classification

Mined Material

[Select All](#)

- Alumina
- Aluminum Ore-Bauxite
- Antimony Ore
- Aplite
- Barite Barium Ore
- Bentonite
- Beryl-Beryllium Ore
- Bituminous Coal Underground Mining
- Bituminous Coal, Lignite
- Boron Minerals
- Brucite

Preliminary Accident Reports, Fatalgrams, and Fatal Accident Reports

[Share](#) [Tweet](#) [in Share](#) [Email](#) [Print](#)

Find current and historical Preliminary Accident Reports, Fatalgrams, and Fatal Accident Reports for coal and metal/nonmetal mines. Access quarterly and annual summaries of mining fatalities along with associated best practices and preventative recommendations. View Investigation Reports for major mining accidents. - See more at: <https://www.msha.gov/data-reports/fatality-reports>

PRELIMINARY ACCIDENT REPORTS, FATALGRAMS, AND FATAL ACCIDENT REPORTS

To view data for previous years visit the legacy [\(Coal\)](#) or [\(Metal/Non-Metal\)](#) page.

Metal and Nonmetal

Fatality #9 - September 20, 2017

Accident Classification: Falling, Rolling, or Sliding Rock or Material of Any Kind

- Location: ARGOS ROBERTA PLANT, Alabama
- Mine Controller: Cementos Argos S A
- Mine Type: Facility
- Mined Material: Cement

[Preliminary Report](#) [Fatalgram](#)

Metal and Nonmetal

Fatality #8 - September 5, 2017

Accident Classification: Powered Haulage

- Location: Emery Pit, North Carolina
- Mine Controller: R G Kirkpatrick Sr.
- Mine Type: Surface

NEXT STEPS

- Add capabilities to save/download dashboards for review
- Make templates available for users to create dashboards
- Solicit input/requirements from
 - Trade Associations
 - Mining Company Operators
 - Safety Directors
 - Labor Organizations
- Consider enhancements to other known issues
- Prepare video tutorial with instructions on using MDRS



Suggestions, Comments, Questions

For Data Visualization:

Syed Hafeez

Director, Program Evaluation and Information Resources

Office Number: 202-693-9765

Email: hafeez.syed@dol.gov

Reza Noorani

Office Number: 202-693-9636

Email: noorani.reza@dol.gov

For Web Content:

JR Wycinsky

Office Number: 202-693-9422

Email: Wycinsky.David@dol.gov

Nancy Cleeland

Office Number: 202-693-9414

Email: cleeland.nancy@dol.gov

