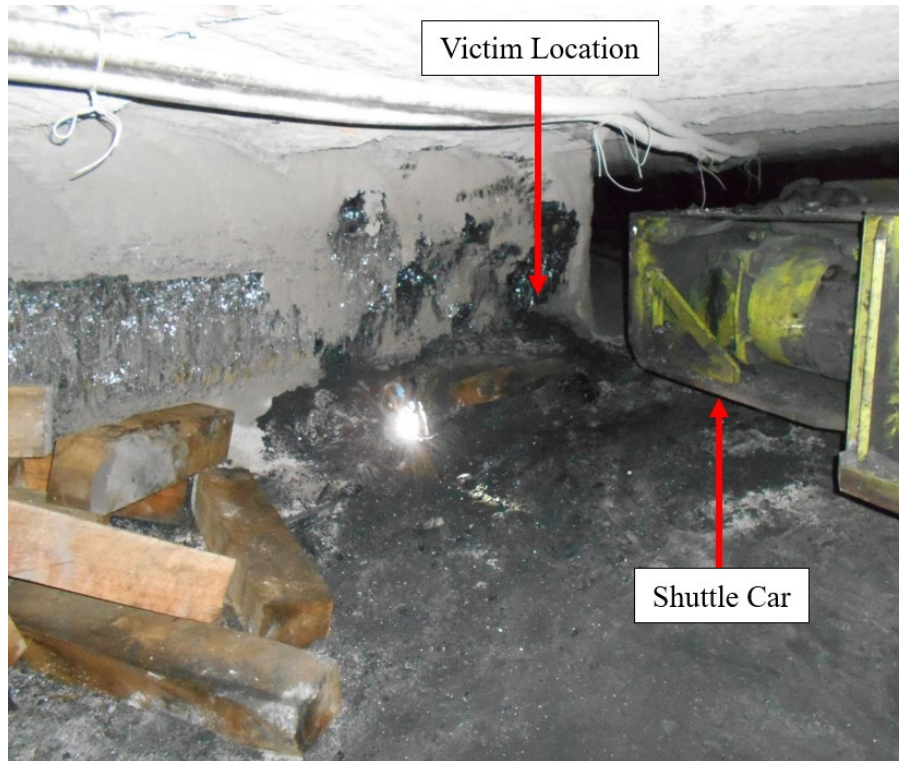


Fatality Alert

MINE FATALITY – On October 2, 2023, a miner died after he was pinned between a shuttle car and a coal rib.



Best Practices

- When working around mobile equipment, communicate your presence and intended movements to equipment operators. Wait for acknowledgement before moving.
- Avoid “Red Zone” areas where equipment operators cannot readily see you.
- Increase the visibility of miners by using reflective clothing and/or strobe light devices.

This is the 35th fatality reported in 2023, and the tenth classified as “Powered Haulage.”

The information provided in this notice is based on preliminary information only and does not represent final determinations regarding the nature of the accident or conclusions regarding the cause of the fatality.

Report accidents and hazardous conditions: 1-800-746-1553

[msha.gov](https://www.msha.gov) | askmsha@dol.gov | [@MSHA_DOL](https://twitter.com/MSHA_DOL)