

2022 MSHA Fatalities

MSHA Stakeholder Meeting

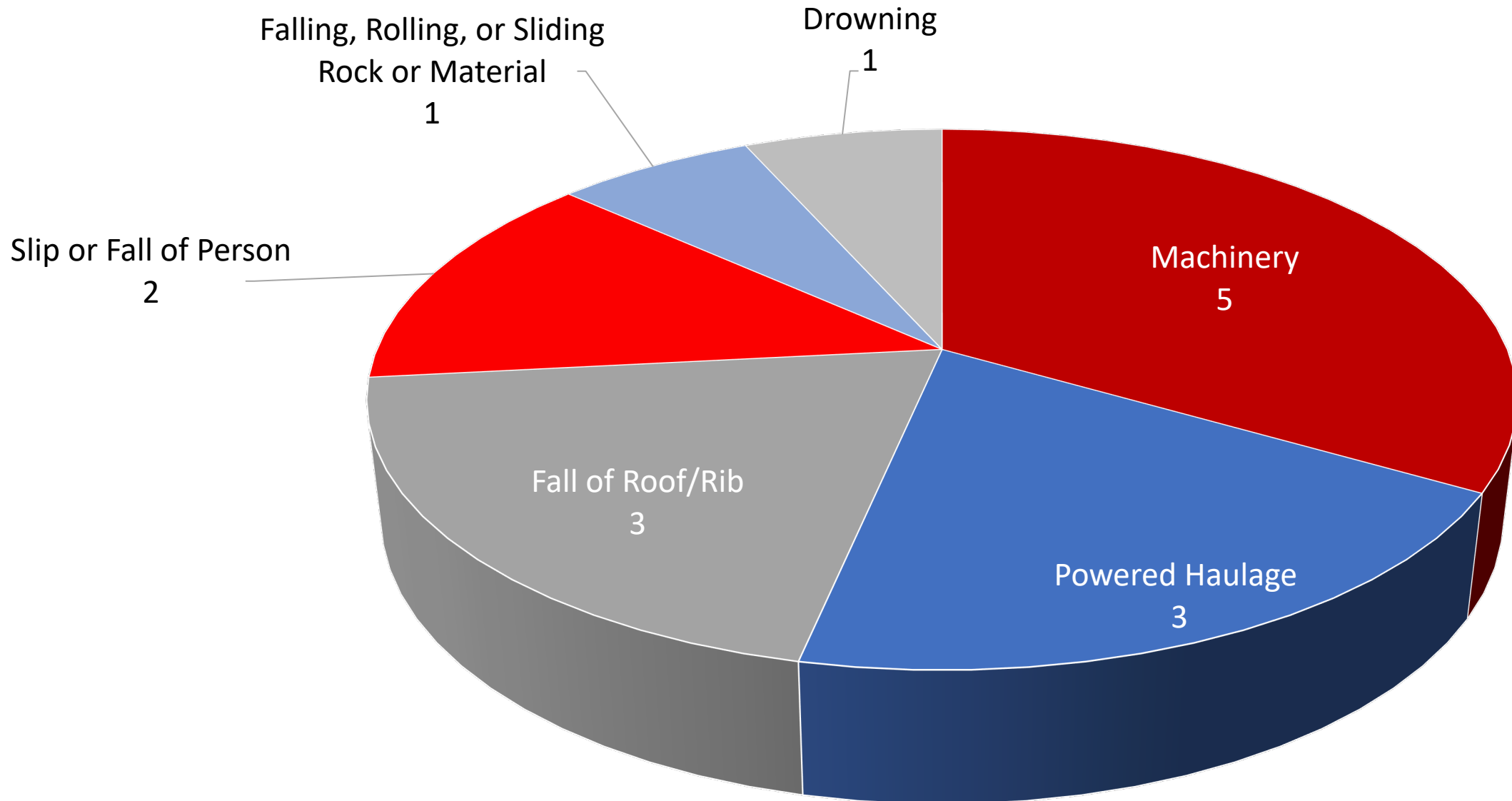
June 28, 2022

Marcus Smith

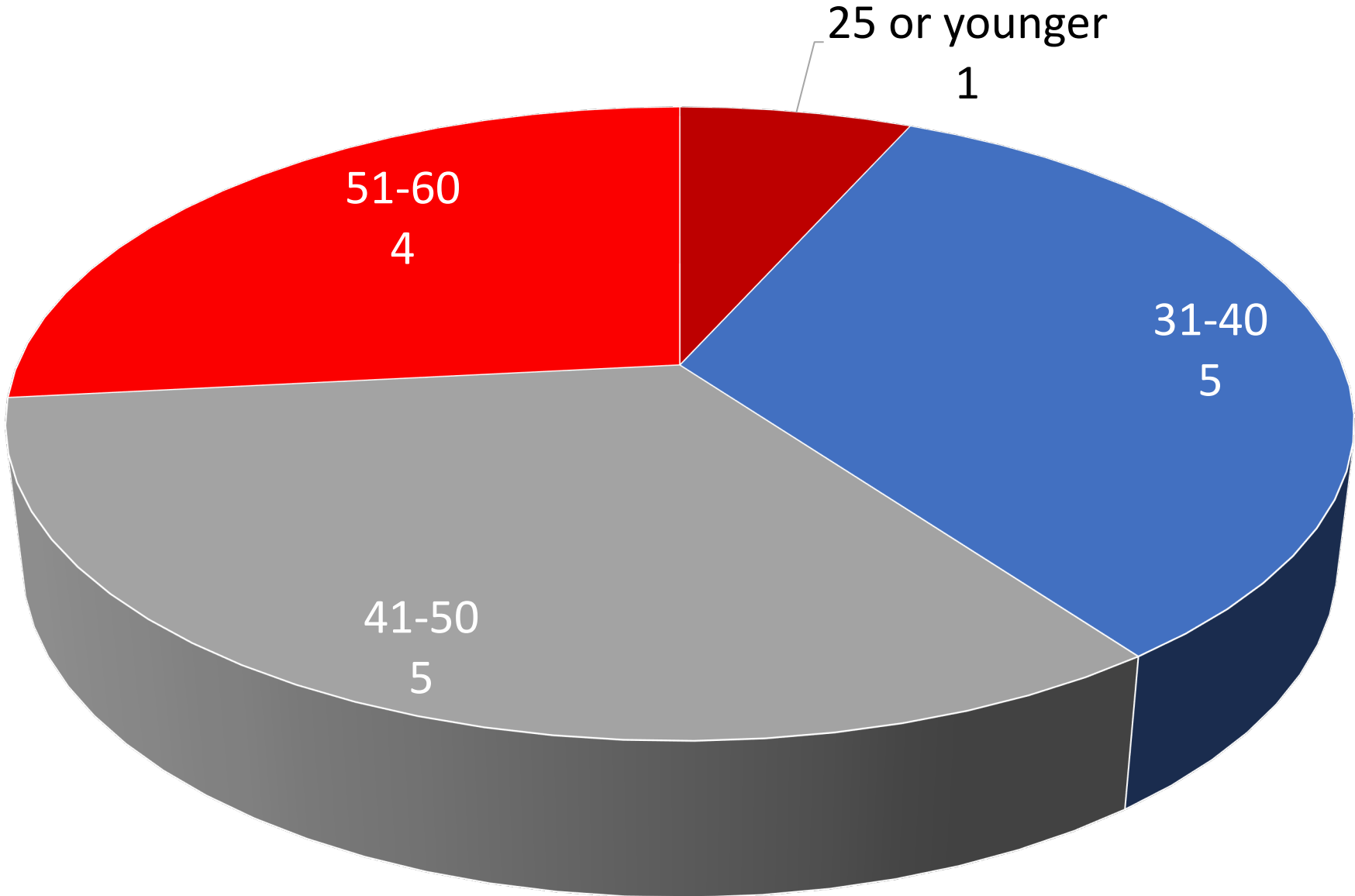
Chief, Accident Investigations

MSHA Enforcement

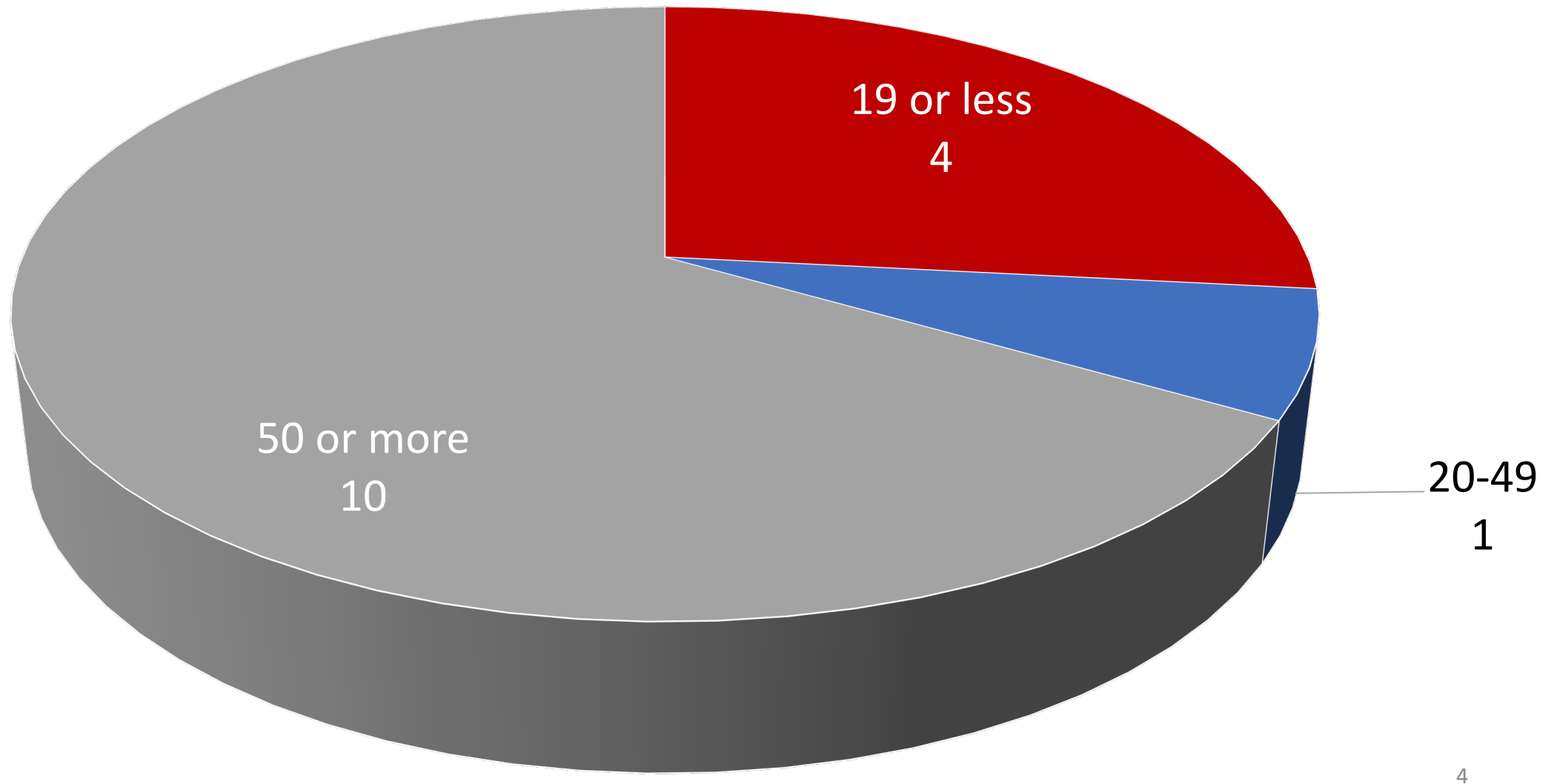
Accident Classifications



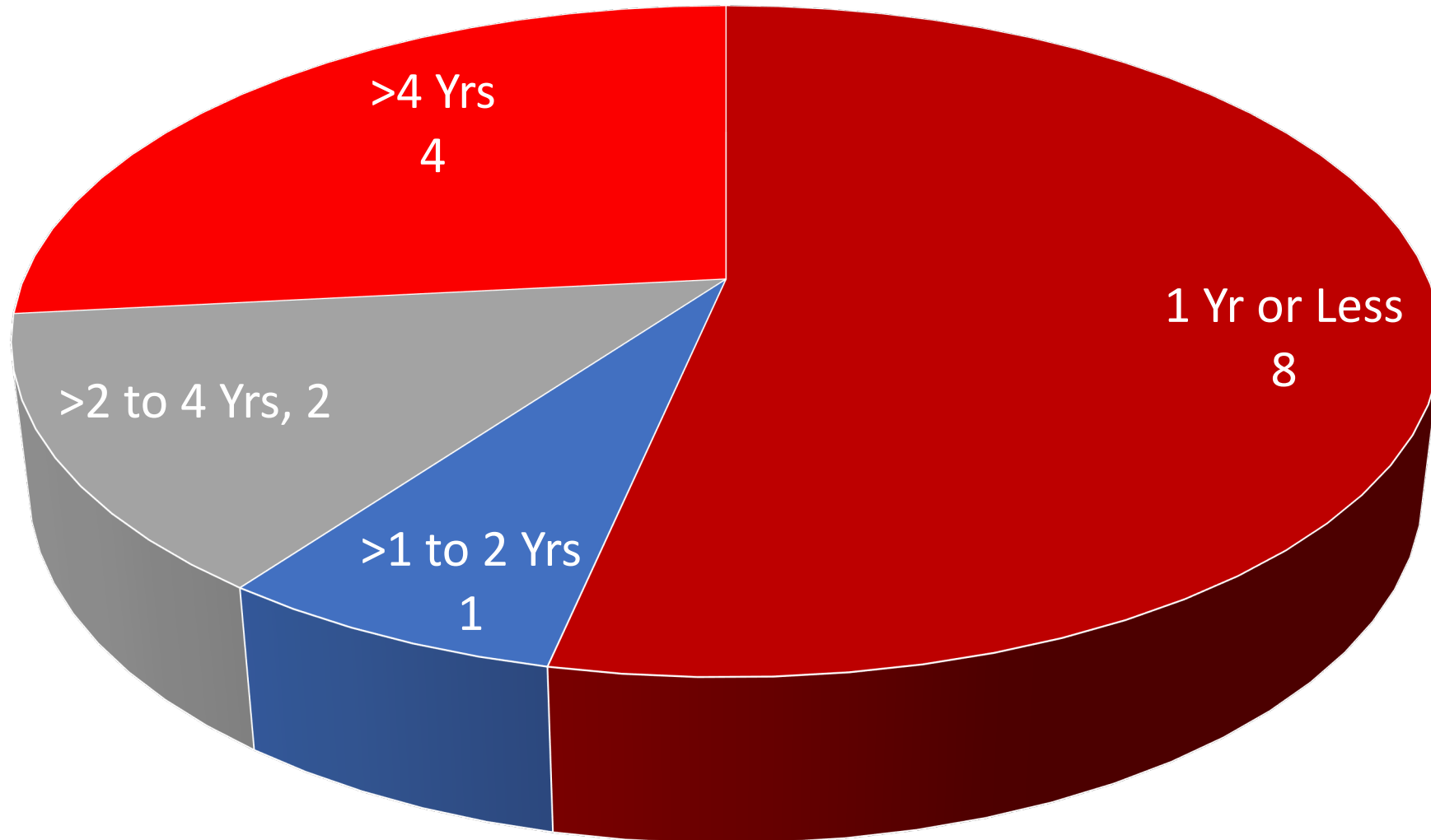
Age



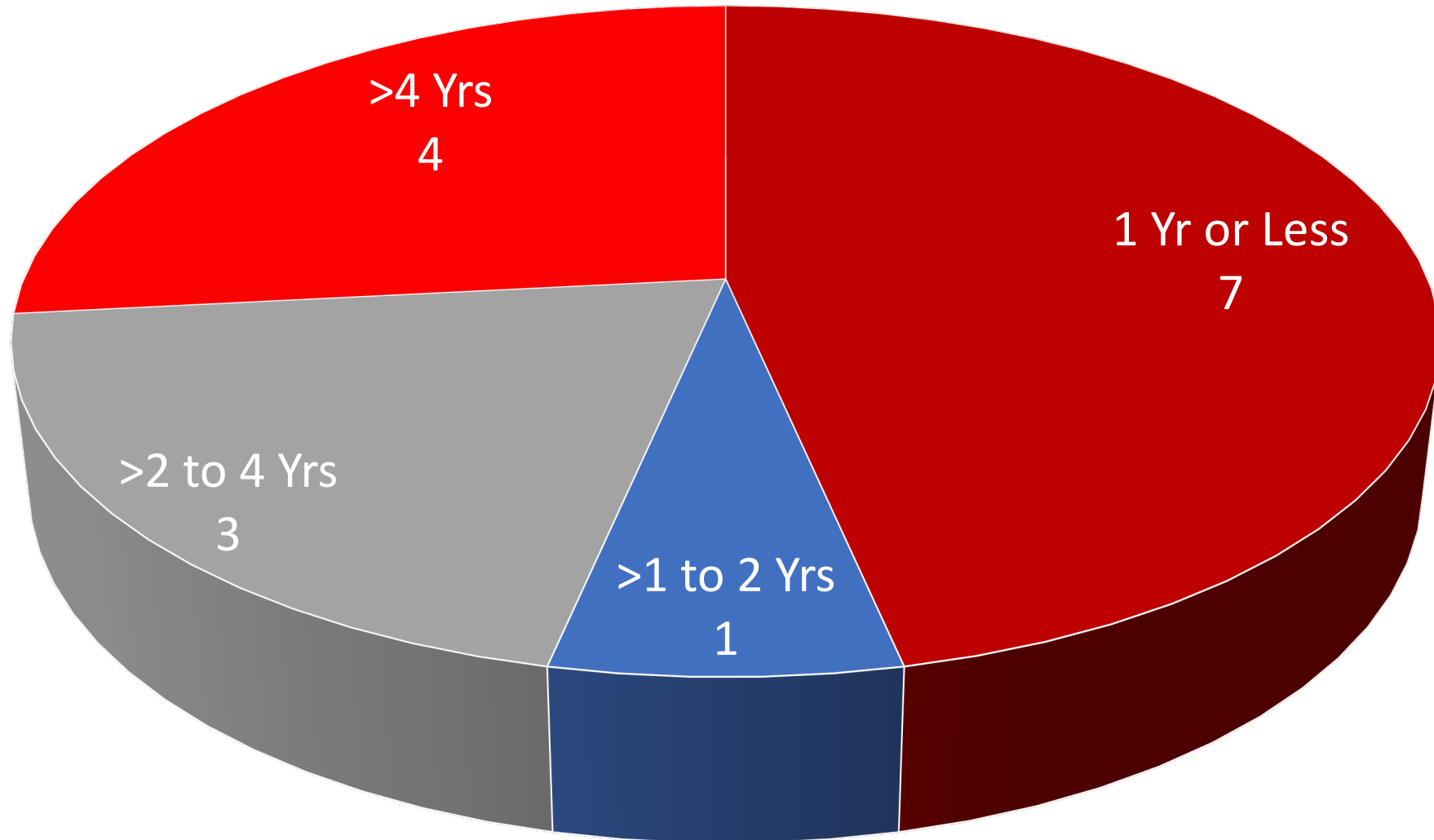
Number of Mine Employees



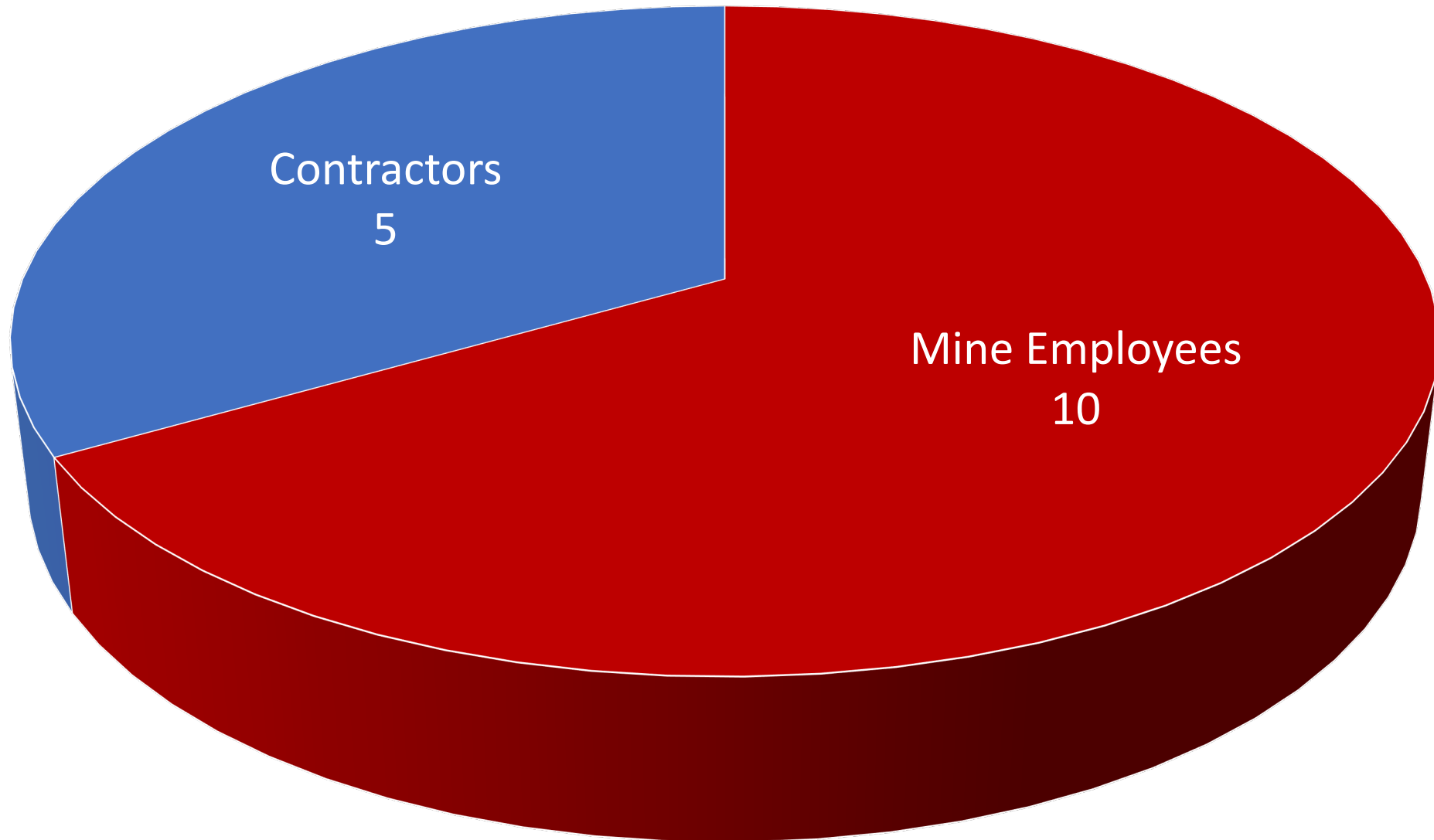
Experience at the Mine



Experience at the Activity



Mine Employees and Contractors



1366 Laurel
Fayette, Pennsylvania
January 7, 2022



A front-end loader operator died when a large rock fell from the mine roof, crushing the cab of the front-end loader. When the accident occurred, the victim was loading material from a recently blasted shot.

Best Practices

- Conduct examinations of the back, face, and ribs where miners work and travel.
- Scale the back and ribs before performing work in an area.
- Install suitable ground support where conditions warrant.

Oaktown Fuels Mine No. 1

Knox, Indiana

January 7, 2022



A continuous mining machine (CMM) operator was fatally injured when he was pinned between the remote controlled CMM and the coal rib.

Best Practices

- Operate equipment from a safe location. Stay out of “Red Zone” areas including pinch points, the CMM turning radius, and areas close to the ribs.
- Maintain proximity detection systems (PDS) in approved operating condition.

Colmar
Bell, Kentucky
January 11, 2022

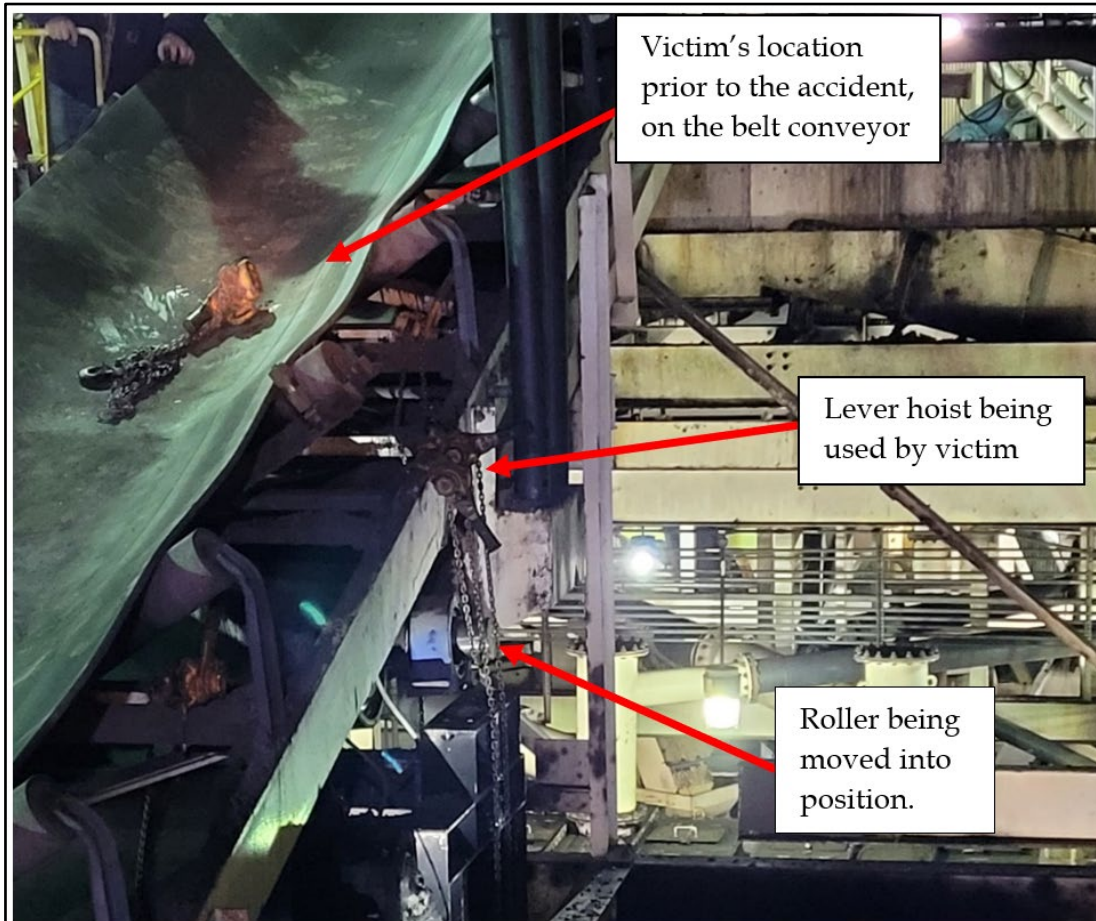


A blaster died when a tree fell from the highwall adjacent to the mine road and struck the cab of the pickup truck that he was driving.

Best Practices

- Examine highwalls frequently. Look for signs of instability such as cracks, sloughing, loose ground, and for fall of material hazards such as large trees and rocks.
- Train all miners to recognize hazardous highwall conditions.
- Clear loose or potentially hazardous material from near the edge of highwalls and slopes, especially when persons will work or travel below.

Ohio County Mine Marshall, West Virginia January 14, 2022



A contract laborer received fatal injuries when he fell 27 feet to a concrete surface. At the time of the accident, the contractor was on a belt conveyor in a preparation plant, working to replace a belt conveyor roller.

Best Practices

- Train miners to use fall protection when a fall hazard exists.
- Ensure fall protection is available and properly maintained.
- Provide identifiable and secure anchor points to attach lanyards and lifelines.

Ouachita Rock Portable Polk, Arkansas January 26, 2022



A dump truck rolled backward onto a miner while the miner was attempting to troubleshoot a brake issue. The dump truck operator was unaware that the miner was under the truck when he released the parking brake, causing the dump truck to roll backward.

Best Practices

- Block machinery or equipment against hazardous motion before performing repairs or maintenance.
- Mine operators should assure that mobile equipment operators communicate with miners around them before moving the equipment.

Freeport-McMoRan Morenci Inc Greenlee, Arizona January 28, 2022



While driving downhill, the driver of a concrete mixer truck was fatally injured after he lost control of the truck. The truck overturned and the driver was ejected from the truck. Another miner, who was in the truck, was also ejected and suffered serious injuries.

Best Practices

- Each shift, inspect equipment before placing it into operation. Correct defects that pose a hazard to miners. Tag out mobile equipment that can't be corrected.
- Always wear seat belts when operating equipment.
- Maintain control of equipment and drive at safe speeds.

Cortez District-Underground Lander, Nevada February 14, 2022



A maintenance technician died while driving a lube truck underground. The truck backed over the edge of a stope and fell approximately 60 feet.

Best Practices

- Provide berms, bumper blocks, or similar impeding devices at dumping locations where there is a hazard of overtravel.
- Examine working places before work begins for conditions that may adversely affect safety and health.

Berwind Deep Mine McDowell, West Virginia February 28, 2022



A contract miner died when he was crushed between the rib and a single boom face drill. The victim was alongside the drill using the onboard tram lever controls when the accident occurred.

Best Practices

- Maintain equipment in safe operating condition. Immediately remove mobile equipment in unsafe condition from service.
- Determine the proper working position to avoid pinch points and “Red Zone” areas.

Maple Springs Mine Somerset Pennsylvania March 2, 2022

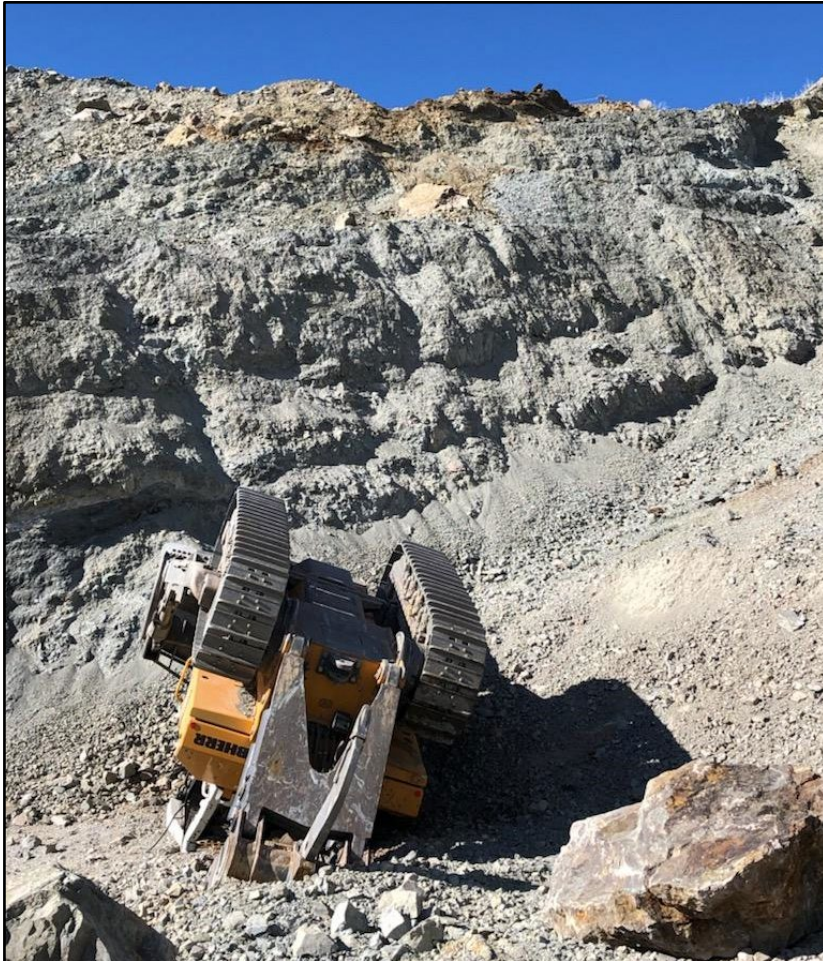


A miner was fatally injured when an overhang along the mine rib fell, striking the miner.

Best Practices

- Examine the roof, face, and ribs immediately before starting work in an area where people work and travel, including sound and vibration testing, where applicable.
- Remove overhangs with the continuous mining machine.
- Scale loose roof and ribs from a safe location. Prevent access to hazardous areas until corrective action is taken.

Brunswick Canyon Materials LLC Carson City, Nevada March 4, 2022



A bulldozer operator died when the bulldozer he was operating went over the edge of the highwall.

Best Practices

- Maintain control of mobile equipment while it is in operation.
- Perform ground condition and workplace examinations.

D-29 Darby Fork
Harlan, Kentucky
March 20, 2022



A miner died when he was struck by a roof fall outby the retreat mining section. The roof fall was approximately 40 feet long, 18 feet wide, and five feet thick.

Best Practices

- Be alert to changing roof conditions, especially during retreat mining.
- Train miners on how to identify hazardous roof and rib conditions.

AMI Silica LLC
Jackson, Wisconsin
March 22, 2022



A heavy equipment operator drowned after the floating pump station he was standing on capsized. At the time of the accident, the miner was assisting a co-worker in connecting a water discharge line.

Best Practices

- Design and use floating platforms in accordance with the manufacturer's specifications.
- Before working on a floating platform:
 - Implement safe work procedures that take into account potential hazards from rain, ice, freezing temperatures, and other environmental conditions.
 - Perform adequate workplace examinations. Check parts that are subject to rust, sun damage, water damage, etc. over long periods of time.
- Wear life jackets where there is danger from falling into water.

Jackson Quarry
Jackson, Georgia
June 17, 2022



A contract miner died when the compactor he was operating overturned.

Best Practices

- Wear seat belts at all times when operating mobile equipment.
- Train miners to perform tasks safely, and to recognize potential hazards.

3 M Little Rock Industrial Mineral Prod Little Rock, Arkansas June 20, 2022



A contract driller was working outside of his drill when he fell over a 25-foot highwall.

Best Practices

- Wear fall protection where there is a danger of falling.
- Train all personnel to recognize potential hazards from falls and understand procedures to safely perform tasks.

Kimballton Plant #1 Ripplemead, Virginia June 20, 2022



A miner was operating a Caterpillar 336 excavator underground when the excavator slid over an embankment and was engulfed by lime dust.

Best Practices

- Perform adequate workplace examinations and promptly correct hazardous conditions that adversely affect safety and health.
- Train all personnel to recognize potential hazards and understand procedures to safely perform tasks.